



## **Management Discussion and Analysis (“MD&A”)**

**Financial Statement Report Date – June 30, 2013**

**Date of this Report – September 25, 2013**

As used in this quarterly report, “we”, “us”, “our”, “Energizer Resources”, “Energizer”, “Company” or “our company” refers to Energizer Resources Inc. and all of its subsidiaries. The term NSR stands for Net Smelter Royalty.

### **ITEM 1. BUSINESS**

#### **BACKGROUND – COMPANY OVERVIEW**

Energizer Resources Inc. (the “Company”) was incorporated in the State of Nevada, United States of America on March 1, 2004 and reincorporated in the State of Minnesota on May 14, 2008. The Company's fiscal year end is June 30. The Company is an Exploration Stage Company, as defined by ASC Topic - 915, “Development Stage Entities”. The Company's principal business is the acquisition and exploration of mineral resources.

During fiscal 2008, the Company incorporated Energizer Resources (Mauritius) Ltd., a Mauritius subsidiary and Energizer Resources Madagascar Sarl, a Madagascar subsidiary. During fiscal 2009, the Company incorporated THB Venture Ltd., a Mauritius subsidiary to hold the interest in Energizer Resources Minerals Sarl, a Madagascar subsidiary, which holds the Green Giant Property in Madagascar. During fiscal 2012, the Company incorporated Madagascar-ERG Joint Venture (Mauritius) Ltd., a Mauritius subsidiary and ERG (Madagascar) Sarl, a Madagascar subsidiary. ERG (Madagascar) Sarl is 100% owned by Madagascar-ERG Joint Venture (Mauritius) Ltd. which is owned 75% by Energizer Resources (Mauritius) Ltd. ERG (Madagascar) Sarl holds the Malagasy Joint Venture Ground.

We have not had any bankruptcy, receivership or similar proceeding since incorporation. Except as described below, there have been no material reclassifications, mergers, consolidations or purchases or sales of any significant amount of assets not in the ordinary course of business since the date of incorporation.

#### **Summary of Our Business**

We are an exploration stage company engaged in the search for graphite, vanadium, gold, uranium and other minerals. We have an interest in properties located in the African country of Madagascar and Canada in the Province of Québec. None of the properties in which we hold an interest have known mineral reserves of any kind at this time. As such, the work programs planned by us are exploratory in nature.

Our executive offices are currently located at 520–141 Adelaide Street West, Toronto, Ontario, Canada M5H 3L5. Our telephone number is (416) 364-4911. We maintain a website at [www.energizerresources.com](http://www.energizerresources.com) (which website is expressly not incorporated by reference into this filing). These offices are leased on a month-to-month basis, and our monthly rental payments are currently CAD\$10,000 per month.

**UNTIL WE CAN VALIDATE OTHERWISE, THE PROPERTIES OUTLINED BELOW HAVE NO KNOWN MINERAL RESERVES OF ANY KIND AND WE ARE PLANNING PROGRAMS THAT ARE EXPLORATORY IN NATURE.**

Further details regarding our properties, although not incorporated by reference, including the comprehensive geological report prepared in compliance with Canada’s National Instrument 43-101 on our Green Giant Property (formerly the “Three Horses Property” in Madagascar) and our Sagar property in Northern Quebec can be found on our Company’s website: [www.energizerresources.com](http://www.energizerresources.com) (which website is expressly not incorporated by reference into this filing) or in

our Company's Canadian regulatory filings on [www.sedar.com](http://www.sedar.com) (which website and content is expressly not incorporated by reference into this filing).

### **Cautionary Note**

Due to the nature of our business, we anticipate incurring operating losses for the foreseeable future. We base this expectation, in part, on the fact that very few mineral properties in the exploration stage ultimately develop into producing profitable mines. Our future financial results are also uncertain due to a number of factors, some of which are outside our control. These factors include, but are not limited to:

- our ability to raise additional capital as required;
- the market price for graphite, vanadium, gold, uranium and for any other minerals which we may find;
- ongoing joint ventures;
- the results of our proposed exploration programs on our mineral properties;
- environmental regulations that may adversely impact cost and operations; and
- our ability to find joint venture partners, as needed, for the development of our property interests.

If we are successful in completing an equity financing, as necessary, existing shareholders will experience dilution of their interest in our Company. In the event we are not successful in raising additional financing, we anticipate that we will not be able to proceed with our business plan. In such a case, we may decide to discontinue our current business plan and seek other business opportunities in the resource sector. During this period, should it ever arise, we will need to maintain our periodic filings with the appropriate regulatory authorities and, as such, will incur legal and accounting costs. In the event no other such opportunities are available and we cannot raise additional capital to sustain operations, we may be forced to discontinue our business altogether. We do not have any specific alternative business opportunities in mind and have not planned for any such contingency.

Due to our lack of operating history and present inability to generate revenues, our auditors have stated their opinion that there currently exists doubt as to our ability to continue as a going concern.

### **Properties**

#### **Madagascar Properties**

##### **Green Giant Property, Madagascar**

On August 22, 2007, we acquired a 75% interest in approximately 225 sq. kilometres of mineral research permits in the District of Toliara, Madagascar from Madagascar Minerals and Resources Sarl. This interest is held by a limited liability company that was formed under the laws of Madagascar. On July 9, 2009, we acquired the remaining 25% interest in the property and now hold a 100% interest in the property, subject to a 2% NSR held by third parties what we can buy back for a total of \$1,500,000.

##### **Joint Venture Ground, Madagascar**

On December 14, 2011, as reported in our Form 8-K, filed with the Securities and Exchange Commission on December 15, 2011, we entered into a Definitive Joint Venture Agreement ("JVA") with Malagasy Minerals Limited ("Malagasy") (Australian Stock Exchange: MGY ("MGY")) to acquire a 75% interest to explore and develop a defined group of industrial minerals. Our Company controls the exploration operations for the industrial minerals on this ground.

#### **Canadian Properties**

##### **Sagar Property – Romanet Horst, Labrador Trough, Québec, Canada**

On May 2, 2006, we signed a letter of intent for an option to acquire a 75% interest in 219 claims located in northern Quebec, Canada. The vendor had the right and option to sell the remaining 25% interest in the property and exercised that right on February 28, 2007. Therefore we now own a 100% interest in this property, subject to a 2% NSR. As there has been a change in government in the province of Quebec, in particular a political party that advocates separation of Canada and Quebec, we are uncertain if any legislation will be introduced that will impact our business plan for this property.

Further details on exploration programs carried out on all our Company's properties can be found below.

### **Competitive Conditions in our Industry**

The mineral exploration and mining industry is competitive in all phases of exploration, development and production. We compete with a number of other entities and individuals in the search for, and acquisition of, attractive mineral properties. As a result of this competition, the majority of which is with companies with greater financial resources than us, we may not in the future be able to acquire attractive properties on terms our management considers acceptable.

Furthermore, we compete with other resource companies, many of whom have greater financial resources and/or more advanced properties that are better able to attract equity investments and other capital. Factors beyond our control may affect the marketability of minerals mined or discovered by us.

**Employees**

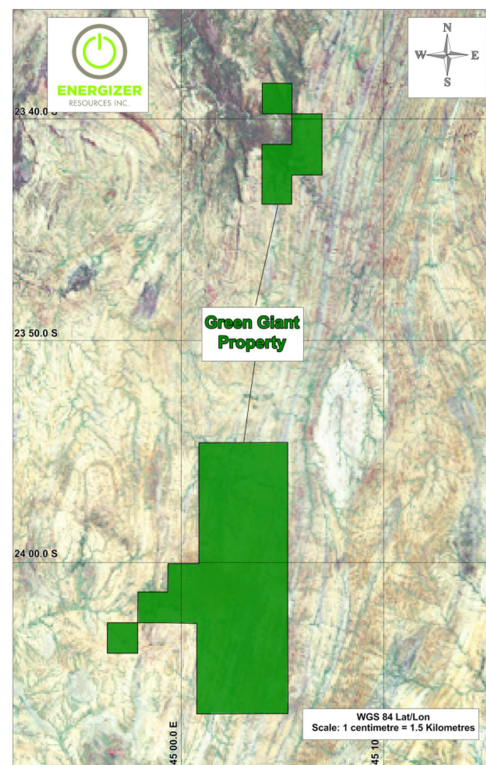
As of September 23, 2013, we had 9 total employees, 7 full-time and 2 part-time employees. In addition to our full time employees, we engage consultants to serve several important managerial and non-managerial functions for us.

## MADAGASCAR PROPERTIES



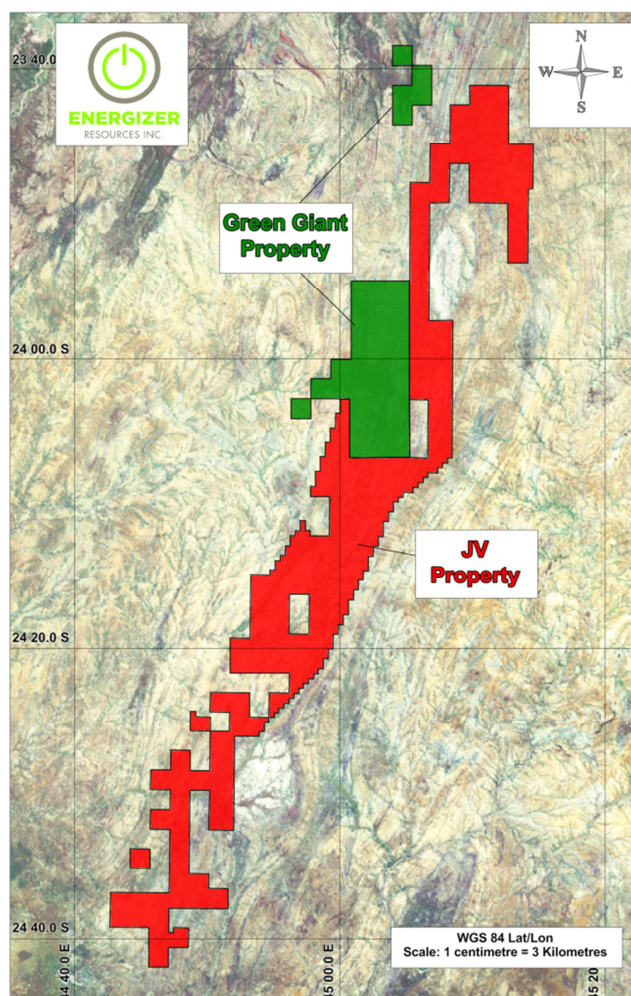
### Green Giant Property Description and Location

The Green Giant Property is comprised of 6 mineral permits. The properties are located in the District of Toliara and are referenced as TN 12,306,P(R); TN 12,814, P(R); TN 12,887 P(R); TN 12,888 P(R); TN 13,020 P(R); TN 13,021 P(R) as issued by the Bureau de Cadastre Minier de Madagascar (“BCMM”) pursuant to the Mining Code 1999 (as amended) and its implementing decrees. The total land position is 225 sq. kilometres. This property can be accessed by both air and road.



### Joint Venture Property Description and Location

The “Joint Venture Property” is comprised of a portion of or all of 39 mineral permits. The properties are located in the District of Toliara and are referenced as TN 3,432,P(R); TN 5,394, P(R); TN 13,064 P(R); TN 13,811 P(R); TN 14,619 P(R); TN 14,620 P(R); TN 14,622 P(R); TN 14,623 P(R); TN 16,747 P(R); TN 16,753 P(R); TN 19,003 P(R); TN 19,851 P(R); TN 19,932 P(R); TN 19,934 P(R); TN 19,935 P(R); TN 21,059 P(R); TN 21,060 P(R); TN 21,061 P(R); TN 21,062 P(R); TN 21,063 P(R); TN 21,064 P(R); TN 24,864 P(R); TN 25,605 P(R); TN 25,606 P(R); TN 28,340 P(R); TN 28,346 P(R); TN 28,347 P(R); TN 28,348 P(R); TN 28,349 P(R); TN 28,352 P(R); TN 28,353 P(R); TN 29,020 P(R); TN 31,734 P(R); TN 31,735 P(R); TN 38,323 P(R); TN 38,324 P(R); TN 38,325 P(R); TN 38,392 P(R); and TN 38,469 P(R) as issued by the Bureau de Cadastre Minier de Madagascar (“BCMM”) pursuant to the Mining Code 1999 (as amended) and its implementing decrees. The total land position is 827.7 sq. kilometres. This property can be accessed by both air and road.



### Agreements

#### Green Giant Property

On August 22, 2007, we entered into a joint venture agreement with MMR, a company incorporated under the laws of Madagascar. The joint venture was operated through a Madagascar limited liability company in which our Company held 75% undivided interest and MMR held the remaining 25% undivided interest.

The consideration paid to MMR to acquire the 75% stake in the joint venture consisted of cash consideration totaling \$765,000 and 1,250,000 of our common shares and 500,000 now expired common share purchase warrants.

On July 9, 2009, we entered into an agreement to acquire the remaining 25% interest of the Green Giant Property for \$100,000. Upon our acquisition of the remaining 25%, the joint venture was terminated. MMR retains a 2% NSR. We

can acquire the NSR on this 25% interest portion at a price of \$500,000 in cash or common shares for the first 1% and at a price of \$1,000,000 in cash or common shares for the second 1% at our option.

### **Joint Venture Ground, Madagascar, Africa**

On December 14, 2011, we entered into a Definitive Joint Venture Agreement (“JVA”) with Malagasy to acquire a 75% interest to explore and develop a defined group of industrial minerals (as noted below). Malagasy retains a 25% interest in the exploration and development of the defined group of industrial minerals. The new land position covers an area totalling 2,119 research permits and 827.7 square kilometres. This land portfolio is mainly adjacent to the south and east of the Company’s Green Giant Property. Under the terms of the JVA, we paid Malagasy \$2,261,690 and issued 7,500,000 of our common shares. Malagasy has a free carried interest until we deliver a Bankable Feasibility Study (“BFS”). Upon the delivery of a BFS, Malagasy will be required to contribute its 25% interest in the development and mining operations. Should either party’s interest subsequently fall below a 10% interest, their position will be diluted to a 2% NSR.

The industrial minerals within the agreements are as follows: Vanadium, Lithium, Aggregates, Alunite, Barite, Bentonite, Vermiculite, Carbonatites, Corundum, Dimensional stone (excluding labradorite), Feldspar (excluding labradorite), Fluorspar, Granite, Graphite, Gypsum, Kaolin, Kyanite, Limestone/Dolomite, Marble, Mica, Olivine, Perlite, Phosphate, Potash –Potassium minerals, Pumice Quartz, Staurolite, Zeolites.

### **DRA Agreement Signed for Ability to Develop and Build Mine**

During January 2012, we signed a formal agreement with South Africa's DRA Mineral Projects (“DRA”), a world-leading process engineering and mining project development management firm, for the development of our projects in Madagascar. Specific focus will be on the development of vanadium and graphite minerals. This partnership provides us with the ability to both build and manage a mining operation. It also provides DRA the option to purchase up to 5% of our Company through private placement at current market conditions.

### **Madagascar Historical Exploration Programs**

The Green Giant Property displays extensive gossans outcroppings at surface. An examination of part of this property revealed several large areas covered with gossanous boulders, which are believed to overlie massive sulphide mineralization. Phases of the exploration projects were managed by our company’s President and COO, Craig Scherba, P. Geol., who at the time was one of our outside consultant geologists. We conducted a first phase of exploration from September to November 2007 that included the following activities:

- Stream Sediment sampling of all stream on the property area
- Detailed Geological mapping over selected stratigraphic horizons
- Reconnaissance geological mapping over the entire property
- Soil sampling over selected target areas and prospecting over selected target areas
- Limited trenching over selected targets
- Construction of a cinder block base camp
- Construction of a one kilometre long surfaced airstrip
- Repair and surfacing of the access road from base camp to the airstrip
- Airborne geophysical surveying

During March 2008-June 2008, a full field exploration program following up on the airborne geophysical survey and results of the 2007 exploration program was implemented. This exploration consisted of the following:

- Infill stream sediment sampling
- Detailed Geological mapping over selected stratigraphic horizons
- Prospecting over selected target areas
- Grid emplacement over selected target areas
- Ground-based magnetometer and frequency domain EM surveys
- Soil sampling over selected target areas

After reviewing the analytical data from the March 2008- June 2008 program, additional exploration was conducted from July 2008 to September 2008 to prepare for a drill program. This exploration consisted of the following:

- Infill stream sediment sampling
- Detailed geological mapping over selected stratigraphic horizons
- Prospecting over selected target areas with the aid of a mobile XRF analyzer



Based on compiled analytical results obtained from the various exploration programs, a drill program was initiated on the property from September 2008-November 2008. This exploration program consisted of the following:

- Prospecting over selected target areas with the aid of a mobile XRF analyzer
- Ground-based scintillometer surveying over selected target areas
- Diamond drilling of 31 holes over 4,073 metres

Based on early indications for vanadium on the property, another exploration program was initiated on the Green Giant Property during the spring of 2009. The program (completed between April 2009-July 2009) consisted of an extensive X-Ray Fluorescence analysis (XRF) soil sampling program coupled with mechanical trenching and scintillometer surveys over possible areas of vanadium enrichment and new areas, defined by the soil XRF survey.

We initiated a vanadium drill program during September 2009-December 2009 consisting of the following:

- XRF soil sample analyses (8,490 samples) on lines 200 metres apart covering 18 kilometre strike length
- Scintillometer surveying (112 line kilometres) on lines 200 metres apart over an 18 kilometre strike length
- Trenching (140 trenches for 17,105 metres)
- Diamond drilling of 54 diamond drill holes over 8,931 metres

The exploration programs to date resulted in the delineation of two vanadium pentoxide ( $V_2O_5$ ) deposits (named the Jaky and Manga), characterized by two separate categories: oxide and primary.

Based on the results of the September 2009-December 2009 program, we conducted an additional exploration program on the property from April 2010-July 2010. This program consisted of the following activities:

- Diamond drilling of 46 diamond drill holes over 8,952 metres
- Prospecting over selected target areas with the aid of a mobile XRF analyzer (20 grab samples)
- Geologic mapping over the Manga and Mainty deposits at 1:5000 scale
- ERT ground geophysical survey (5.64 km)
- MAG ground geophysical survey (169.53 km)
- Gradient Array EM ground geophysical survey (128.82 km)

In 2011, the identification of graphite in the Manga, Jaky and Mainty zones led our geologists to conduct a reconnaissance exploration program (Phase I program) on the properties in September, 2011. The goal of this exploration program was to delineate new graphitic trends, and compare them to those associated with vanadium mineralization. This program consisted of the following activities:

- Diamond drilling of 10 holes over 1,157.5 metres
- Trenching (16 trenches for 1,912 metres)
- Prospecting over selected target areas

An additional reconnaissance exploration program was conducted from November 2011-December, 2011 (Phase II program). The purpose of this program was to ascertain the industrial mineral potential on the Joint Venture Ground, and further drill testing of graphitic trends on the Green Giant Property. This program consisted of the following:

- Diamond drilling of 20 holes over 2,842 metres
- Prospecting over selected target areas
- EM31 ground geophysical survey over selected target areas (160.5 km)

The discovery of graphite mineralization from the 2011 exploration programs resulted in the initiation of a resource delineation drill program from May 2012-August 2012. This program consisted of the following:

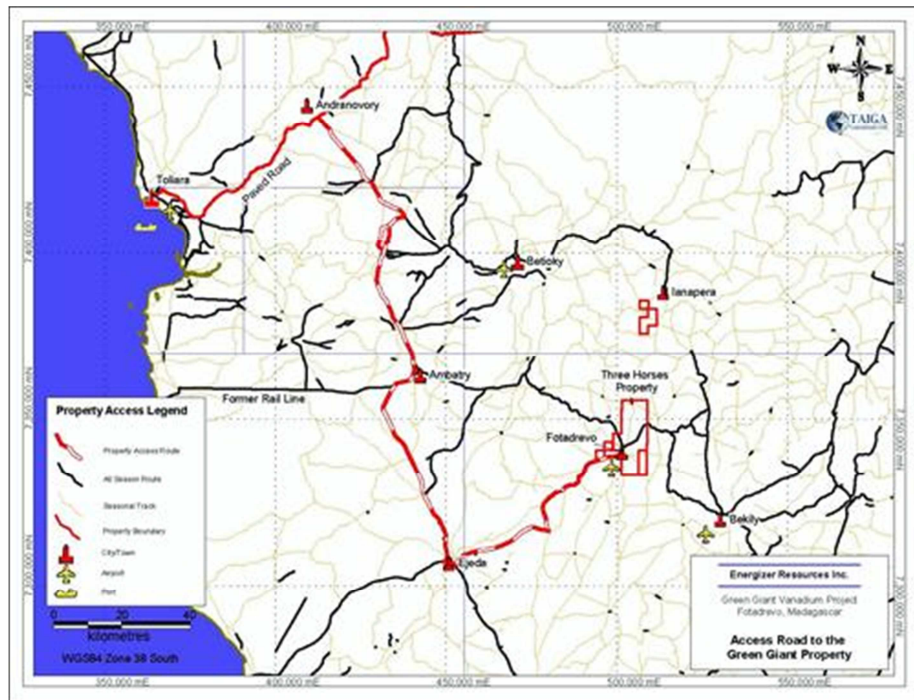
- Trenching (18 trenches for 2,100 metres)
- Diamond drilling of 41 diamond drill holes over 8,459 metres

The resource delineation drill program identified that graphite mineralization could be divided into a high grade zone (6 to 10% carbon) that produces small to large graphite flakes, and a low grade zone (4 to 6% carbon) that produces large to jumbo graphite flakes. A bulk sampling program was undertaken in May 2013 with the purpose of collecting two separate samples, in order to test the nature of the low-grade and high-grade deposits to see if they have different requirements. The two bulk samples were submitted for metallurgical test work, which is deemed to be representative of the future plant feed, and hence could be used for a Bankable Feasibility Study going forward. In order to be representative, an external geological consultant determined a sample size of 100 tonnes each was deemed sufficient. It is currently anticipated that this test work will likely be completed by the end of December 2013.

## Madagascar Infrastructure

- **Road Access**

Access to the Company's Molo Graphite Deposit from Toliara, starts with a 70 km paved road to the village of Andranovory. From Andranovory, secondary all-season roads continue to Betioky, a distance of 93 km. From Betioky, the Molo Graphite Deposit can be reached from Ambatry to Fotadrevo, a distance of 105 km, for an overall total of 268 km, or from Betioky to Ejeda then onwards to Fotadrevo, a distance of 161 km, for an overall total of 324 km. The second route from Ejeda to Fotadrevo is used by heavy transport trucks and by all vehicles during portions of the rainy season, as the other route can become impassable. At the height of the rainy season, both routes to Fotadrevo may become impassable. From Fotadrevo, the Molo Graphite Deposit may be reached by a fairly well maintained dirt track. The map below shows the road access to the Molo Graphite Deposit from the town of Toliara.



Map of Road Structure from Toliara to Fotadrevo

## Air Access

With the upgrading of an existing airstrip at Fotadrevo to an all-weather airstrip during the 2008 exploration program, our Madagascar properties are accessible year-round by private aircraft out of Antananarivo, except under special circumstance caused by continuous or multiple days of heavy rain. Flying times to Fotadrevo are approximately 2.5 hours from Antananarivo and 45 minutes from Toliara.





**Photo of the Landing Strip at Fotadrevo**

Antananarivo is currently serviced by Air France (Paris), South African Airways (Johannesburg), and Air Mauritius (Mauritius). Air Madagascar also provides service to Paris, Johannesburg, Mauritius, Nairobi, and Réunion Island. Domestically, Air Madagascar has regularly scheduled jet and propjet flights throughout the country, including daily flights between Antananarivo and Toliara.

The village of Fotadrevo, where our Company has its base camp, is located to the west of the Molo Graphite Deposit. The village has been a labour source during our Company's exploration programs, and will likely provide a portion of the workforce during future exploration and development. A few basic goods are commercially available in the village, however, the main centre for support of exploration and development are the cities of Toliara and Antananarivo. Two 40 kVA diesel-powered generators provide power to the camp facility.

A cellular telephone tower is located in Fotadrevo, which provides phone and internet coverage. No potable water is currently available within the project area. A well 123 millimetre in diameter has been drilled to a depth of 42 metres within the camp compound, which provides non-potable water for the camp.

## **Graphite Market and Pricing**

### **Market Overview**

According to Industrial Minerals magazine, the natural graphite market is 1,015,100 tonnes of which roughly 55% is flake and 45% is low grade amorphous (or 582,800 flake, 428,300 amorphous, 4,000 vein). Graphite is produced globally, however China currently accounts for most of the graphite production with a market share of 77%. Two tables listing the current major production countries of flake and amorphous graphite are below (*Source: Natural Graphite Report 2012, Industrial Minerals, [www.indmin.com](http://www.indmin.com)*):

<b>Country</b>	<b>Flake output</b>
China	380,000
Brazil	96,000
India	35,000
North Korea	30,000
Canada	21,000
Norway	8,000
Zimbabwe	5,000
Madagascar	4,000
Russia	2,000
Ukraine	1,500

Germany	300
<b>Total</b>	<b>582,800</b>

<b>Country</b>	<b>Amorphous output</b>
China	400,000
Austria	16,000
Mexico	12,000
Turkey	300
<b>Total</b>	<b>428,300</b>

China produces 77% of the world's graphite, however most of its production is low grade amorphous. The graphite industry in China is undergoing fundamental reforms. China is protecting its domestic supply and has imposed a combined 37% export duty and value added tax. Furthermore, China is consolidating and closing a large number of mines, between 180-200, to preserve graphite resources and address environmental concerns.

### **Current Demand**

Graphite has many wide-ranging uses from refractories to anodes in batteries (*Source: Natural Graphite Report 2012, Industrial Minerals, [www.indmin.com](http://www.indmin.com)*)

Refractories, foundry and crucibles	39%
Metallurgy	28%
Parts and components	10%
Batteries	9%
Lubricants	9%
Other	5%

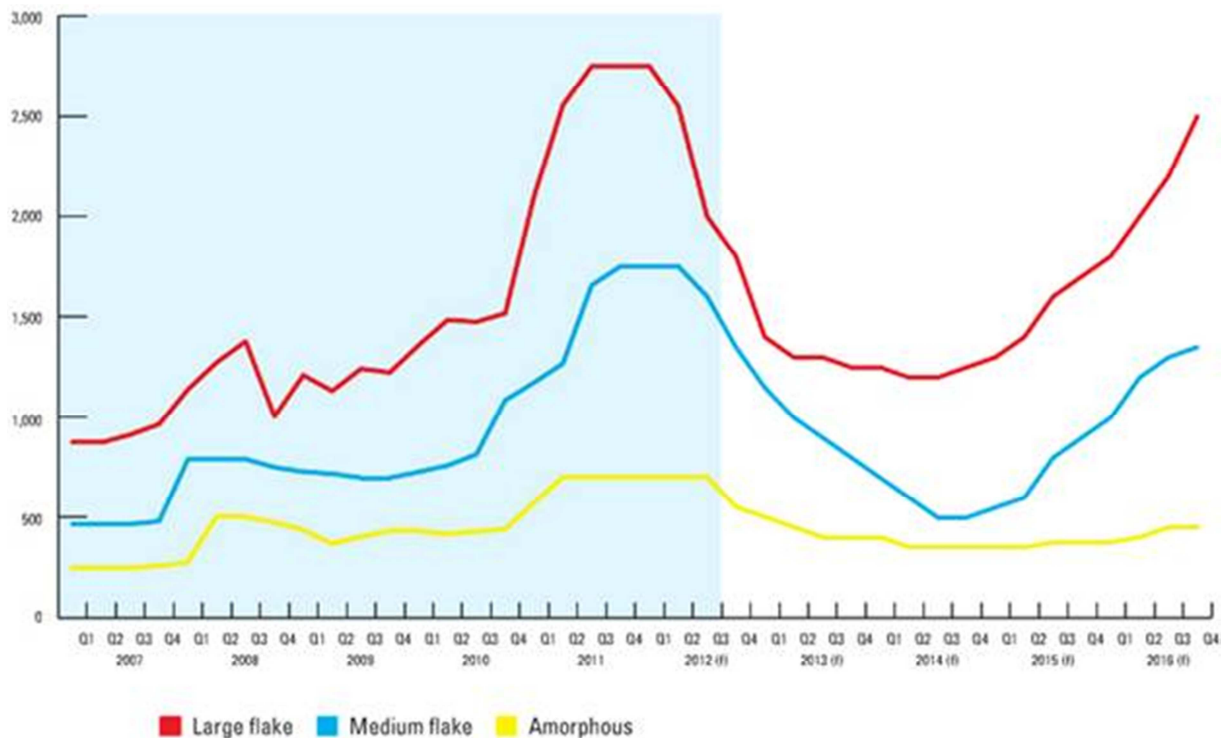
### **Future Demand**

Batteries alone is the fastest growing market for graphite with growth between 15-25% a year (*Source: Industrial Minerals, 2012*) and future demand for graphite is expected through the uptake of lithium-ion batteries (Li-ion). There is 11 times more graphite in a Li-ion battery than there is lithium and demand for graphite in Li-ion batteries, specifically from the growth of the electric vehicle market, is expected to be significant. Other future demand drivers include pebble bed nuclear reactors, fuel cells, large-scale energy storage and graphene.

### **Graphite Pricing**

Graphite pricing is a function of flake size and purity where larger flake and higher purity command premium pricing in the market. The three major categories for flake graphite are large, medium, and small (amorphous).

Graphite is not freely traded on an open market. This means determining its price is somewhat of an opaque market as prices are determined through contracts between buyers and sellers. Nevertheless, Industrial Minerals performs regular customer surveys tracking pricing trends and, from their analysis, overall graphite prices have substantially increased since 2007 due to increased demand and constrained supply. Recently however, graphite prices have decreased from their peak due to the slowdown in the global economy particularly in Europe and Asia. Despite this recent decline, future prices are predicted to remain strong as can be outlined in the graph below:



Source: Natural Graphite Report 2012, Industrial Minerals, [www.indmin.com](http://www.indmin.com)

### Vanadium Market and Pricing

Source of this entire section: United States Geological Survey. Data in metric tons of vanadium content unless otherwise noted

#### Domestic Production and Use

Seven U.S. firms comprise most of the domestic vanadium industry produced ferrovandium, vanadium pentoxide, vanadium metal and vanadium-bearing chemicals or specialty alloys by processing materials such as petroleum residues, spent catalysts, utility ash and vanadium-bearing pig iron slag. Metallurgical use, primarily as an alloying agent for iron and steel, accounted for about 93% of the U.S. vanadium consumption in 2011. Of the other uses for vanadium, the major non-metallurgical use was in catalysts for the production of maleic anhydride and sulfuric acid.

<b><u>Salient Statistics—United States</u></b>	<b>2008</b>	<b>2009</b>	<b>2010</b>	<b>2011</b>	<b>2012est</b>
Production, mine, mill	520	230	1,060	590	270
<b><u>Imports for consumption:</u></b>					
Ferrovandium	2,800	353	1,340	2,220	3,400
Vanadium pentoxide, anhydride	3,700	1,120	4,000	2,810	1,570
Oxides and hydroxides, other	144	25	167	886	1,210
Aluminum-vanadium master alloys (gross weight)	618	282	951	278	180
Ash and residues	1,040	791	521	1,420	1,500
Sulfates	2	16	48	42	40
Vanadates	187	214	158	303	320
Vanadium metal, including waste and scrap	5	22	10	44	110
<b><u>Exports:</u></b>					
Ferrovandium	452	672	611	314	530
Vanadium pentoxide, anhydride	249	401	140	89	40
Oxides and hydroxides, other	1,040	506	1,100	254	190
Aluminum-vanadium master alloys (gross weight)	1,390	447	1,190	920	1,400
Vanadium metal, including waste and scrap	57	23	21	102	10
<b><u>Consumption:</u></b>					
Apparent	5,820	1,040	5,190	6,963	6,400
Reported	5,170	4,690	5,030	5,120	5,200
Stocks, consumer, yearend	335	295	248	2185	2220
* Price, average, dollars per pound V2O5	\$12.92	\$5.43	\$6.46	\$6.76	\$6.52
Imports + exports + adjustments for government and industry stock changes as a percentage of apparent consumption	91%	78%	81%	92%	96%

\* Vanadium is not freely traded on an open market. This means determining prices for vanadium is somewhat of an opaque market as prices are determined through contracts between buyers and sellers.

### **Events, Trends, and Issues**

U.S. apparent consumption of vanadium in 2012 decreased by 9% from its 2011 level; however, it was still almost six times higher than its level in 2009. Apparent consumption of vanadium declined dramatically in 2009 from that of 2008 owing to the global economic recession in 2009. Among the major uses for vanadium, production of carbon, full-alloy, and high-strength low-alloy steels accounted for 16%, 45%, and 33% of domestic consumption, respectively. U.S. imports for consumption of vanadium in 2012 increased 4% from those of the previous year. U.S. exports increased 29% from those of the previous year.

In the fourth quarter of 2011, vanadium pentoxide (V2O5) prices continued to decrease to a year-to-date low of \$6.22 per pound of V2O5 in December 2011. In January 2012, prices continued to decrease to a year-to-date low of \$5.83 per pound of V2O5 until February when prices began to slowly increase again. In August 2012, V2O5 prices averaged \$6.60 per pound of V2O5, slightly more than average V2O5 prices in August 2011. In the fourth quarter of 2011, U.S. ferrovandium (FeV) prices continued to slowly decrease to a year-to-date low of \$13.19 per pound FeV (contained vanadium) in December 2011. In January 2012, prices continued to decrease until February 2012 when prices began to slowly increase. In August 2012, FeV prices averaged \$15.60 per pound of FeV.

### **World Mine Production and Reserves**

Production data for the United States were revised based on new company information.

	<b>Mine production</b>		<b>Reserves (thousand metric tons)</b>
	<b>2011</b>	<b>2012est</b>	
China	23,000	23,000	5,100
South Africa	22,000	22,000	3,500
Russia	15,200	16,000	5,000
United States	1,590	1,270	45
Other countries	1,600	1,600	not applicable
World total (approximate)	63,390	63,870	14,000

### **World Resources the Substitutes**

World resources of vanadium exceed 63 million tons. Vanadium occurs in deposits of phosphate rock, titaniferous magnetite, and uraniferous sandstone and siltstone, in which it constitutes less than 2% of the host rock. Significant amounts are also present in bauxite and carboniferous materials, such as coal, crude oil, oil shale, and tar sands. Because vanadium is usually recovered as a byproduct or co-product, demonstrated world resources of the element are not fully indicative of available supplies. While domestic resources and secondary recovery are adequate to supply a large portion of domestic needs, a substantial part of U.S. demand is currently met by foreign material.

Steels containing various combinations of other alloying elements can be substituted for steels containing vanadium. Certain metals, such as manganese, molybdenum, niobium (columbium), titanium, and tungsten, are to some degree interchangeable with vanadium as alloying elements in steel. Platinum and nickel can replace vanadium compounds as catalysts in some chemical processes. There is currently no acceptable substitute for vanadium in aerospace titanium alloys.

### **Permitting in Madagascar**

Companies in Madagascar first apply for an exploration mining permit with the Bureau de Cadastre Minier de Madagascar ("BCMM"), a government agency falling under the authority of the Minister of Mines. Permits are granted under usual circumstances are generally issued within a month. The 2013 fees per square within a mining permit range from 89,800 Ariary to 359,000 Ariary (between \$42 and \$165 using a current exchange rate of 2,175 Madagascar Ariary = \$1 USD). The number of squares varies widely by claim number. For the 2013 year, the Company paid approximately \$350,000 to the BCMM to renew all of its claims in Madagascar. This fee covered both the 100% owned Green Giant Property (6 claims) and the 75% owned Joint Venture Property (39 claims). Each year the Company is required to pay a similar amount in order to maintain the claims in good standing.

The next step in the permitting process, which our Company has initiated, is to apply for an exploitation permit. Our Company has engaged a third party environmental study company in Madagascar to assist us with this process. In order to get an exploitation permit, an investment plan, exploitation work plan budget and specific ground mapping is submitted to the BCMM. This step is completed in conjunction with a submission of an environmental impact study for the BCMM. This environmental impact study includes, among other things, completion of a water study and a social impact study.

### **QA/QC Protocols**

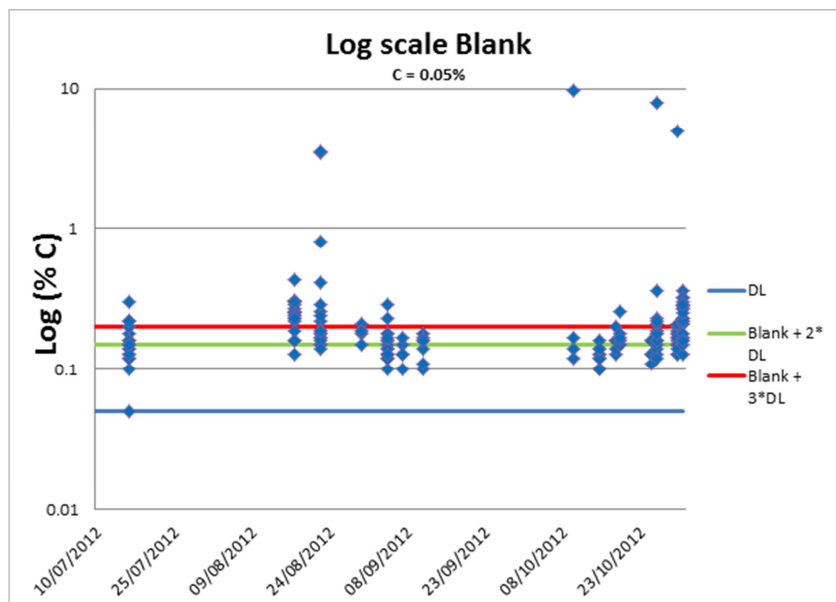
At all times during sample collection, storage, and shipment to the laboratory facility, the samples are in the control of our Company or parties that we have contracted to act as our agents.

When sufficient sample material (grab, trench or core) has been collected, the samples are flown or sent by truck to our storage location in Antananarivo, Madagascar. At all times samples are accompanied by an employee, consultant or agent of our Company. From there, samples are shipped to labs either in South Africa or Canada for ICP-MS analysis.

All analytical results are e-mailed directly by the lab to the Company's project manager on site in Madagascar and to our Company's geological and executive staff. Results are also posted on a secure website and downloaded by our Company's personnel using a secure username and password. All of the labs that carried out the sampling and analytical work are independent of our Company.

In order to carry out QA/QC protocols on the assays, blanks, standards and duplicates were inserted into the sample streams. This was done once in every 30 samples, representing an insertion rate of 3.33% of the total.

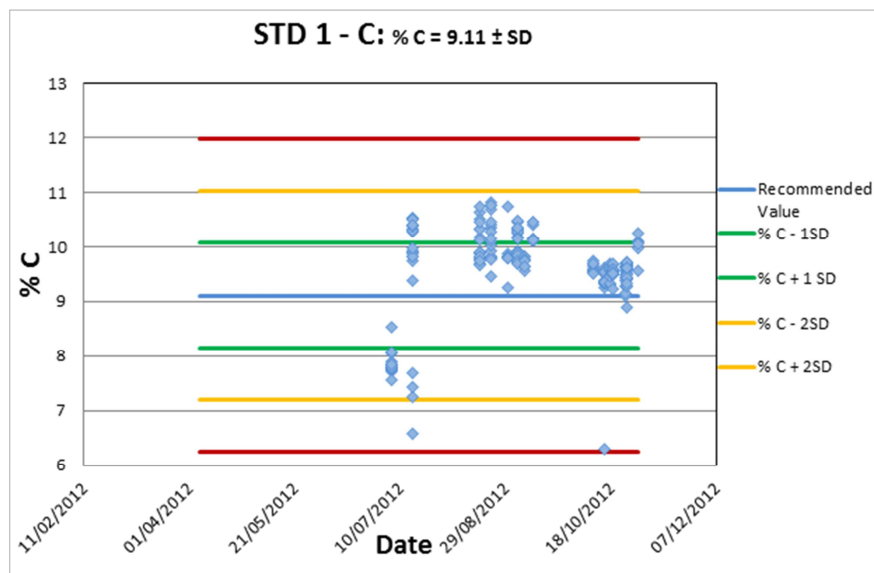
Since the 2009 Madagascar drill program, our Company has rigorously implemented a blank protocol. For the Molo Graphite Deposit a fine-grained quartz sand sourced from a hardware store in Antananarivo was used as the blank material for the sampling campaign. A total of 208 blank samples were used in this program. A detection limit of 0.05% Carbon was used for the purpose of this exercise. To verify the reliability of the blank samples, the detection limit and the blank + 2, and 3 times the detection limit were plotted against the date. The plot shows that there are a lot of blank samples that have concentrations that exceed the blank + 3 times detection limit threshold. This, coupled with the large spread of data points, would lead to the assumption that samples may have been contaminated during their preparation for analysis.



**Blanks plot – Log %C versus the date of the analysis.**

Since certified reference materials (“CRMs”) are essentially non-existent for graphite, our Company commissioned a third party lab in Canada to create a CRM from the remaining Molo Graphite Deposit drill core pulps from the 2011 program. As certified the third party lab standard (STD 1 C) a recommended value of 9.11 % Carbon.

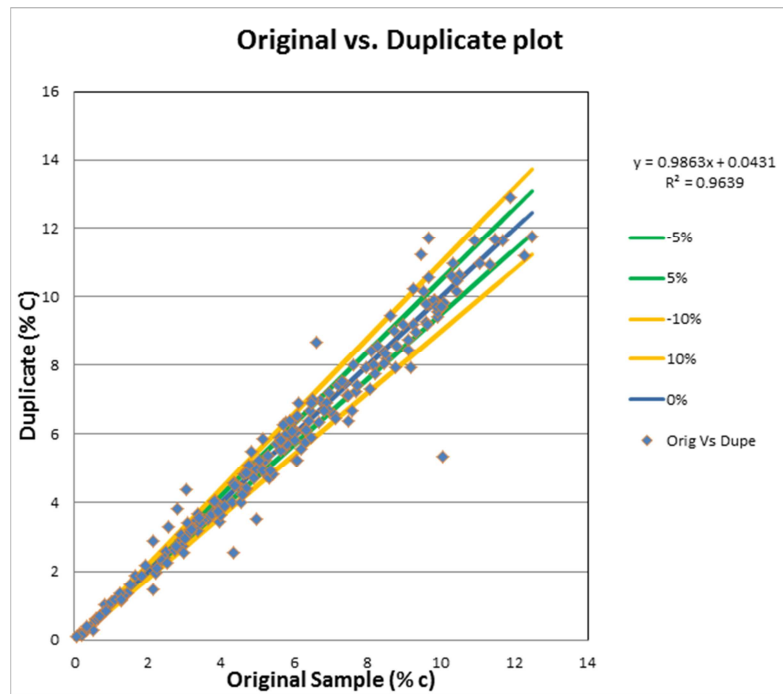
To check the reliability of the standard, a plot of the recommended CRM value versus date was created. The upper and lower limits of one, two and three times the standard deviations of the recommended value are also included in the plot. All the results except for two fall within the acceptable limit of two times the standard deviation. It is however worth noting that there seems to be a negative bias towards lower concentrations in the first batch of samples that were submitted. As the campaign progressed the bias leant towards the positive side. This issue appears to have been sorted out towards the latter parts of the campaign as the data becomes less spread, and is closer to the recommended value.



**Graph showing carbon concentration as analyzed in STD 1C.**

For the Molo Graphite Deposit, 205 field duplicates were prepared. To check how close these were to the original samples, a plot of the original samples with a zero, five, and ten per cent difference of the original samples was created. The majority of the samples were within the 10% difference limit. The plot also shows a good correlation between the original value and the duplicate, as is evident from the regression line with an  $R^2$  value of 0.96.





Original ("Orig") versus Duplicate ("Dupe") plots.

#### Next Steps

The Company is updating metallurgical test work from the May 2013 samples that were collected. A thorough review of the results of this information will determine whether additional resource expansion drilling is necessary. Further infill drilling may be required to upgrade any resource estimate that falls inside the pit design shell or to improve the geological confidence in the model and to upgrade the mineral resources.

#### Future Programs

The economic potential of the property rests upon the ability to extract graphite and/or vanadium using reasonable, potentially economic parameters. Initial metallurgical results indicate that an economic processing method is available to extract graphite. This will be determined within an updated Preliminary Economic Assessment anticipated for release in early 2014. The results of this study will dictate how our management proceeds with project development.

## SAGAR PROPERTY



### Property Description and Location

The Sagard Property comprises 383 blocks of claims in the Province of Québec, Canada. The approximate centre of exploration activity is circa 56°22' N latitude and circa 68° 00' W longitude. Details on the individual claims are available on-line at the Government of Québec's Ministère des Ressources Naturelles et de la Faune GESTIM website at <https://gestim.mines.gouv.qc.ca>. This property can be accessed by air.

These claims comprise approximately 6,580 hectares. In this region of the Province of Québec, "map staking" predetermines claim outlines. This can be done via a claim staking system with the Ministère des Ressources Naturelles ("MNR"). Previously, the map-staking grid, producing some of the small parcels, superimposes upon staked claims. There are no carried environmental liabilities on the property. Each claim costs CAD \$112 and is active for a one year period. Each following year our Company is required to spend a certain dollar amount to keep the claim in good standing or pay CAD \$112 per annum in lieu of performing any work. All surface work requires provincial government permits, including camp construction permits. Our Company is current with these permits.

To be able to conduct an exploration project, our Company needs to obtain permits pertaining to water, forest management and waste disposal for any camp location set-up. These permits are obtained from various Quebec government ministries. This entire process takes approximately than one month to complete. With obtaining the required permits our Company is required to pay approximately CAD \$200 per claim per annum.

When our Company is exploring, our power comes from a generator. Management currently believes that water is ample as the property has a lake and several streams. There are no bonding requirements relating to permits issued out of Quebec at the exploration stage.

### Agreement

On May 2, 2006, we signed a letter of intent with Virginia Mines Inc. ("Virginia") for an option to acquire a 75% interest in 200 claims located in northern Québec, Canada. Virginia had the right and option to sell the remaining 25% interest in the property. This agreement was subject to a 2% NSR. Virginia had previously acquired a 100% interest in the property, subject to a 1% NSR on certain claims, and a 0.5% NSR on other claims. Virginia has the right to buy back half of the 1% NSR for \$200,000 and half of the 0.5% NSR for \$100,000. In order to exercise its option, we issued Virginia 2,000,000 of our common shares, 2,000,000 now expired common share purchase warrants and incurred exploration expenditures greater than \$2,000,000 on the property before September 1, 2008. Further, on February 28, 2007 Virginia exercised its option to sell its remaining 25% interest on the property to us for 1,000,000 common shares valued at \$1,219,000 and 1,000,000 now expired common share purchase warrants. As a result of these agreements, we now own a 100% interest in this property, subject to the noted NSR's. We are currently up to date with all obligations required to maintain the property in good standing.

## **FERDERBER**

### **Property Description and Location**

We acquired a 100% undivided right, title and interest in and to 19 mining claims (0036315, 0036316, 0036317, 0036318, 0036319, 0036320, 0036321, 0036322, 0036323, 0036324, 0036325, 0036326, 0036327, 0030649, 0030650, 0030640, 0030638, 0030612, 0030613) held by Peter Ferderber, covering an area of approximately 64 hectares located in the Central Labrador Trough Region of Québec, 13 of which are contiguous to our Sagar Property. This property can be accessed by air. In consideration of our receiving a 100% interest in these claims, subject to any NSR royalties, we paid Mr. Ferderber CAD\$6,000, and issued 150,000 of our common shares and 75,000 now expired common share purchase warrants. Mr. Ferderber retained a 1% NSR on this property and agreed that we shall have a first right of refusal to purchase the 1% NSR should Mr. Ferderber elect to sell the royalty. We are currently up to date with all obligations required to maintain the property in good standing.

### **Sagar and Ferderber Property Geological Highlights**

The geological setting of the property is the northwest trending Romanet Horst within the Labrador Trough. The significant mineral potential of this geological setting is well demonstrated, we believe, by the abundance and diversity of uranium-gold showings, which range from veins to breccia's to shear zones. There is also locally significant sedimentary-hosted copper mineralization. Our management contends that the most significant mineralization found to date is the 500 x 200 metre Mistamisk boulder field which contains 150 boulders that range up to 640 g/t gold and 4.11% uranium, with 70 tested boulders averaging 64.9g/t gold and 1.3% uranium. The boulders discovered within the Mistamisk boulder field range in length from 0.30 to 2.0 metres. Previous work has not determined the bedrock source of this boulder field.

Copper mineralization has been defined in several spots, the most significant being the Dehli-Pacific showing, which has reported 4.2% copper over 7.6 metres within a drill hole that intersected a shear zone along a sediment-gabbro contact.

### **Potential Future Programs**

In light of empirical observations collected during the course of 2007 exploration activities, other targets have been identified which could prove to be volumetrically more significant than the source of the Mistamisk Boulder Field. In order of priority, management believes future exploration on the Sagar Property should focus on the discovery of:

- Gold and uranium mineralization at redox boundaries along major faults. This work should focus on the intersection between the Romanet fault and the reducing lithologies of the Dunphy and Lace Lake formations.
- Unconformity associated polymetallic uranium-style mineralization at the Archean basement contact. The 'Kilo' soil anomaly should be targeted for this exploration due to the anomalous soil, RC, and DDH geochemistry, as well as the numerous coincident geophysical anomalies.
- Iron-Oxide Copper Gold (IOCG) mineralization. This work should focus on the east-west structure bisecting the Romanet Horst. In particular, the area to the southwest of the Lac Plisse showing should be drill tested as it has coincident gravity and magnetic highs, and has an anomalous IOCG-related geochemical signature for RC, soil, and water geochemical data. Additionally, the DDH geochemistry and alteration mineralogy observed from holes in the 'Alpha' soil target area should be re-examined in the context of IOCG mineralization.
- Source mineralization for the Mistamisk Boulder Field. The anomalous Alpha, Delta, and Kilo soil targets, as well as A, B, and E RC targets identified during the course of the 2007 exploration program should be examined to ascertain the source mineralization for the Mistamisk Boulder Field.

### **Other Expenses**

Management anticipates spending approximately \$350,000 - \$450,000 in ongoing general office and administration expenses and professional fees per quarter for the next twelve months. Expenses will vary in direct proportion with the level of activity relating to future acquisitions and exploration programs.

## ITEM 1A. - RISK FACTORS

*Our business is subject to a variety of risks and uncertainties, including, but not limited to, the risks and uncertainties described below. If any of the risks described below, or elsewhere in this report on Form 10-K, or our Company's other filings with the Securities and Exchange Commission (the "SEC"), were to occur, our financial condition and results of operations could suffer and the trading price of our common stock could decline. Additionally, if other risks not presently known to us, or that we do not currently believe to be significant, occur or become significant, our financial condition and results of operations could suffer and the trading price of our common stock could decline.*

You should carefully review the risk factors together with all other information contained in this Annual Report on Form 10-K, and in prior reports pursuant to the Securities Exchange Act of 1934, as amended and the Securities Act of 1933, as amended. Our risk factors, including but not limited to the risk factors listed below, are as follows:

### **SHOULD ONE OR MORE OF THE FOREGOING RISKS OR UNCERTAINTIES MATERIALIZE, OR SHOULD THE UNDERLYING ASSUMPTIONS OF OUR BUSINESS PROVE INCORRECT, ACTUAL RESULTS MAY DIFFER SIGNIFICANTLY FROM THOSE ANTICIPATED, BELIEVED, ESTIMATED, EXPECTED, INTENDED OR PLANNED.**

#### **The report of our independent registered public accounting firm contains explanatory language that substantial doubt exists about our ability to continue as a going concern.**

The independent auditor's report on our financial statements contains explanatory language that substantial doubt exists about our ability to continue as a going concern. Due to our lack of operating history and present inability to generate revenues, we have sustained operating losses since our inception. Since our inception, up to June 30, 2013, we had accumulated net losses of \$75,073,641. If we are unable to obtain sufficient financing in the near term as required or achieve profitability, then we would, in all likelihood, experience severe liquidity problems and may have to curtail our operations. If we curtail our operations, we may be placed into bankruptcy or undergo liquidation, the result of which will adversely affect the value of our common shares.

#### **We may not have access to sufficient capital to pursue our business and therefore would be unable to achieve our planned future growth.**

We intend to pursue a strategy that includes development of our Company's business plan. Currently we have limited capital, which is insufficient to pursue our plans for development and growth. Our ability to implement our Company's plans will depend primarily on our ability to obtain additional private or public equity or debt financing. Such financing may not be available, or we may be unable to locate and secure additional capital on terms and conditions that are acceptable to us. Financing exploration plans through equity financing will have a dilutive effect on our common shares. Our failure to obtain additional capital will have a material adverse effect on our business.

#### **Our primary exploration efforts are in the African country of Madagascar, where democratic elections are planned for 2013.**

Any adverse developments to the political situation in Madagascar could have a material effect on our Company's business, results of operations and financial condition. Democratic elections in Madagascar are planned for 2013 but whether the elections calendar jointly established between the UN and the Elections Commissions can be maintained is uncertain. To date, our Company has not experienced and disruptions or been placed under any constraints in our exploration efforts due to the political situation in Madagascar. Depending on future actions taken by the transitional government, or any future government, our Company's business operations could be impacted.

A roadmap, designed by the Southern African Development Community, was signed by the various political factions on September 17, 2011, a government of national unity was formed during November 2011 and the transition parliament was re-structured to include opposition members. An independent elections commission was established in April 2012. The African Union has endorsed this roadmap. This roadmap provides a path for democratic elections. At the date of this report, presidential elections were scheduled for October 25, 2013, while parliamentary elections and second-round presidential elections were set for December 20, 2013, as announced by the elections commission and the United Nations. The consequences of the outcome of these elections (or the further failure to hold them) may adversely affect our business plan and operations.

We are actively monitoring the political climate in Madagascar and continue to hold meetings with representatives of the government and the Ministry of Mines. The transformation or amendment of exploration and research mining permits within the country continues to be suspended. Our Company has continued to pay taxes and administrative fees in Madagascar with respect to all the mining permits we hold. These payments have been acknowledged and accepted by the Madagascar government.

**Our common shares have been subject to penny stock regulation in the United States of America.**

Our common shares have been subject to the provisions of Section 15(g) and Rule 15g-9 of the (US) Securities Exchange Act of 1934, as amended (the “Exchange Act”), commonly referred to as the “penny stock” rule. Section 15(g) sets forth certain requirements for transactions in penny stocks and Rule 15g-9(d)(1) incorporates the definition of penny stock as that used in Rule 3a51-1 of the Exchange Act. The Commission generally defines penny stock to be any equity security that has a market price less than US\$5.00 per share, subject to certain exceptions. Rule 3a51-1 provides that any equity security is considered to be penny stock unless that security is: registered and traded on a national securities exchange meeting specified criteria set by the Commission; issued by a registered investment company; excluded from the definition on the basis of price (at least US\$5.00 per share) or the registrant’s net tangible assets; or exempted from the definition by the Commission. If our common shares are deemed to be “penny stock”, trading in common shares will be subject to additional sales practice requirements on broker/dealers who sell penny stock to persons other than established customers and accredited investors.

**Financial Industry Regulatory Authority, Inc. (“FINRA”) sales practice requirements may limit a shareholder’s ability to buy and sell our common shares.**

In addition to the “penny stock” rules described above, FINRA has adopted rules that require that in recommending an investment to a client, a broker-dealer must have reasonable grounds for believing that the investment is suitable for that client. Prior to recommending speculative low priced securities to their non-institutional clients, broker-dealers must make reasonable efforts to obtain information about the client’s financial status, tax status, investment objectives and other information. Under interpretations of these rules, FINRA believes that there is a high probability that speculative low priced securities will not be suitable for at least some clients. FINRA requirements make it more difficult for broker-dealers to recommend that their clients buy our common shares, which may limit your ability to buy and sell our stock and have an adverse effect on the market for our shares.

**As a public company we are subject to complex legal and accounting requirements that will require us to incur significant expenses and will expose us to risk of non-compliance.**

As a public company, we are subject to numerous legal and accounting requirements in both Canada and the United States of America that do not apply to private companies. The cost of compliance with many of these requirements is material, not only in absolute terms but, more importantly, in relation to the overall scope of the operations of a small company. Our relative inexperience with these requirements may increase the cost of compliance and may also increase the risk that we will fail to comply. Failure to comply with these requirements can have numerous adverse consequences including, but not limited to, our inability to file required periodic reports on a timely basis, loss of market confidence, delisting of our securities and/or governmental or private actions against us. We cannot assure you that we will be able to comply with all of these requirements or that the cost of such compliance will not prove to be a substantial competitive disadvantage vis-à-vis privately held and larger public competitors.

**Compliance with changing regulation of corporate governance and public disclosure will result in additional expenses and pose challenges for our management.**

Changing laws, regulations and standards relating to corporate governance and public disclosure, including the Dodd-Frank Wall Street Reform and Consumer Protection Act and the rules and regulations promulgated thereunder, the Sarbanes-Oxley Act and SEC regulations, have created uncertainty for public companies and significantly increased the costs and risks associated with accessing the U.S. public markets. Our management team needs to devote significant time and financial resources to comply with both existing and evolving standards for public companies, which will lead to increased general and administrative expenses and a diversion of management time and attention from revenue generating activities to compliance activities.

**Because we are quoted on the OTCQX instead of a national securities exchange in the United States, our U.S. investors may have more difficulty selling their stock or experience negative volatility on the market price of our stock in the United States.**

In the United States, our common shares are quoted on the OTCQX. The OTCQX is marketed as an electronic exchange for high growth and early stage U.S. companies and a prospective “final step toward a NASDAQ or NYSE listing” (although no assurances can be provided that such change of market shall occur). Trades are settled and cleared in the U.S. similar to any NASDAQ or NYSE stock and trade reports are disseminated through Yahoo, Bloomberg, Reuters, and most other financial data providers. The OTCQX can be significantly illiquid, in part because it does not have a national quotation system by which potential investors can follow the market price of shares except through information received and generated by a limited number of broker-dealers that make markets in particular stocks. There is a greater chance of volatility for securities that trade on the OTCQX as compared to a national securities exchange in the United States, such as the New York Stock Exchange, the NASDAQ Stock Market or the NYSE Amex. This

volatility may be caused by a variety of factors, including the lack of readily available price quotations, the absence of consistent administrative supervision of bid and ask quotations, lower trading volume, and market conditions. U.S. investors in our common shares may experience high fluctuations in the market price and volume of the trading market for our securities. These fluctuations, when they occur, have a negative effect on the market price for our common shares. Accordingly, our U.S. shareholders may not be able to realize a fair price from their shares when they determine to sell them or may have to hold them for a substantial period of time until the market for our common shares improves.

In addition to being quoted on the OTCQX, our common shares trade on the Toronto Stock Exchange (“TSX”), Canada’s national stock exchange, under the symbol EGZ and on the Frankfurt Exchange under the symbol YE5.

**The price at which you purchase our common shares may not be indicative of the price that will prevail in the trading market. You may be unable to sell your common shares at or above your purchase price, which may result in substantial losses to you. The market price for our common shares is particularly volatile given our status as a relatively unknown company with a small and thinly traded public float, limited operating history and lack of profits which could lead to wide fluctuations in our share price.**

The market for our common shares is characterized by significant price volatility when compared to seasoned issuers, and we expect that our share price will continue to be more volatile than a seasoned issuer. The volatility in our share price is attributable to a number of factors. First our common shares, at times, are thinly traded. As a consequence of this lack of liquidity, the trading of relatively small quantities of shares by our shareholders may disproportionately influence the price of those shares in either direction. The price for our shares could, for example, decline precipitously in the event that a large number of our common shares are sold on the market without commensurate demand, as compared to a seasoned issuer which could better absorb those sales without adverse impact on its share price. Second, we are a speculative or “risky” investment due to our limited operating history, lack of profits to date and uncertainty of future market acceptance for our potential products. As a consequence, more risk-averse investors may, under the fear of losing all or most of their investment in the event of negative news or lack of progress, be more inclined to sell their shares on the market more quickly and at greater discounts than would be the case with the stock of a seasoned issuer. Many of these factors are beyond our control and may decrease the market price of our common shares, regardless of our performance. We cannot make any predictions as to what the prevailing market price for our common shares will be at any time or as to what effect that the sale of shares or the availability of common shares for sale at any time will have on the prevailing market price.

Shareholders should be aware that, according to SEC Release No. 34-29093, the market for penny stocks has suffered in recent years from patterns of fraud and abuse. Such patterns include control of the market for the security by one or a few broker-dealers that are often related to the promoter or issuer; manipulation of prices through prearranged matching of purchases and sales and false and misleading press releases; boiler room practices involving high-pressure sales tactics and unrealistic price projections by inexperienced sales persons; excessive and undisclosed bid-ask differential and markups by selling broker-dealers; and the wholesale dumping of the same securities by promoters and broker-dealers after prices have been manipulated to a desired level, along with the resulting inevitable collapse of those prices and with consequent investor losses. Our management is aware of the abuses that have occurred historically in the penny stock market. Although we do not expect to be in a position to dictate the behavior of the market or of broker-dealers who participate in the market, management will strive within the confines of practical limitations to prevent the described patterns from being established with respect to our securities. The occurrence of these patterns or practices could increase the volatility of our share price.

**Volatility in our common share price may subject us to securities litigation, thereby diverting our resources that may have a material effect on our profitability and results of operations.**

The market for our common shares is characterized by significant price volatility when compared to seasoned issuers, and we expect that our share price will continue to be more volatile than a seasoned issuer for the indefinite future. In the past, plaintiffs have often initiated securities class action litigation against a company following periods of volatility in the market price of its securities. We may in the future be the target of similar litigation. This type of litigation could result in substantial costs and could divert management’s attention and resources.

**Failure to achieve and maintain effective internal controls in accordance with Section 404 of the Sarbanes-Oxley Act of 2002 (the “Sarbanes-Oxley Act”) could have a material adverse effect on our business and our operating results.**

If we fail to comply with the requirements of Section 404 of the Sarbanes-Oxley Act regarding internal control over financial reporting or to remedy any material weaknesses in our internal controls that we may identify, such failure could result in material misstatements in our financial statements, cause investors to lose confidence in our reported financial information and have a negative effect on the trading price of our common shares.



Pursuant to Section 404 of the Sarbanes-Oxley Act and current SEC regulations, we are required to prepare assessments regarding internal controls over financial reporting. In connection with our on-going assessment of the effectiveness of our internal control over financial reporting, we may discover “material weaknesses” in our internal controls as defined in standards established by the Public Company Accounting Oversight Board, or the PCAOB. A material weakness is a significant deficiency, or combination of significant deficiencies, that results in more than a remote likelihood that a material misstatement of the annual or interim financial statements will not be prevented or detected. The PCAOB defines “significant deficiency” as a deficiency that results in more than a remote likelihood that a misstatement of the financial statements that is more than inconsequential will not be prevented or detected.

In the event that a material weakness is identified, as it has been for this report, subject to expansion of the size of our Company and our finance department, we will employ qualified personnel and adopt and implement policies and procedures to address any material weaknesses that we identify. However, the process of designing and implementing effective internal controls is a continuous effort that requires us to anticipate and react to changes in our business and the economic and regulatory environments and to expend significant resources to maintain a system of internal controls that is adequate to satisfy our reporting obligations as a public company. We cannot assure you that the measures we will take will remediate any material weaknesses that we may identify or that we will implement and maintain adequate controls over our financial process and reporting in the future.

Any failure to complete our assessment of our internal control over financial reporting, to remediate any material weaknesses that we may identify or to implement new controls, or difficulties encountered in their implementation, could harm our operating results, cause us to fail to meet our reporting obligations or result in material misstatements in our financial statements. Any such failure could adversely affect the results of the management evaluations of our internal controls. Inadequate internal controls could also cause investors to lose confidence in our reported financial information, which could have a negative effect on the trading price of our common shares.

**Should we lose the services of our key executives, our financial condition and proposed expansion may be negatively impacted.**

We depend on the continued contributions of our executive officers to work effectively as a team, to execute our business strategy and to manage our business. The loss of key personnel, or their failure to work effectively, could have a material adverse effect on our business, financial condition, and results of operations. Specifically, we rely on Richard E. Schler, our Chief Executive Officer, Craig Scherba, our President and Chief Operating Officer and Peter D. Liabotis, our Chief Financial Officer. We do not maintain key man life insurance. Should we lose any or all of their services and we are unable to replace their services with equally competent and experienced personnel, our operational goals and strategies may be adversely affected, which will negatively affect our potential revenues.

**Minnesota law and our articles of incorporation protect our directors from certain types of lawsuits, which could make it difficult for us to recover damages from them in the event of a lawsuit.**

Minnesota law provides that our directors will not be liable to our Company or to our stockholders for monetary damages for all but certain types of conduct as directors. Our articles of incorporation require us to indemnify our directors and officers against all damages incurred in connection with our business to the fullest extent provided or allowed by law. The exculpation provisions may have the effect of preventing stockholders from recovering damages against our directors caused by their negligence, poor judgment or other circumstances. The indemnification provisions may require our Company to use its assets to defend our directors and officers against claims, including claims arising out of their negligence, poor judgment, or other circumstances.

**We have not identified any mineral reserves or resources and due to the speculative nature of mineral property exploration, there is substantial risk that no commercially exploitable minerals will be found and our business will fail.**

Exploration for minerals is a speculative venture involving substantial risk. We cannot provide investors with any assurance that our claims and properties contain commercially exploitable reserves. The exploration work that we intend to conduct on our claims or properties may not result in the discovery of commercial quantities of graphite, vanadium, gold, uranium, or other minerals. Problems such as unusual and unexpected rock formations and other conditions are involved in mineral exploration and often result in unsuccessful exploration efforts. In such a case, we would be unable to complete our business plan.

**We are a mineral exploration company with a limited operating history and expect to incur operating losses for the foreseeable future.**

We are a mineral exploration company. We have not earned any revenues and we have not been profitable. Prior to

completing exploration on our claims, we may incur increased operating expenses without realizing any revenues. There are numerous difficulties normally encountered by mineral exploration companies, and these companies experience a high rate of failure. The likelihood of success must be considered in light of the problems, expenses, difficulties, complications and delays encountered in connection with the exploration of the mineral properties that we plan to undertake. These potential problems include, but are not limited to, unanticipated problems relating to exploration and additional costs and expenses that may exceed current estimates. We have no history upon which to base any assumption as to the likelihood that our business will prove successful, and we can provide no assurance to investors that we will generate any operating revenues or ever achieve profitable operations.

**Because of the speculative nature of mineral property exploration, there is substantial risk that no commercially exploitable minerals will be found and our business will fail.**

Exploration for minerals is a speculative venture involving substantial risk. We cannot provide investors with any assurance that our claims and properties contain commercially exploitable reserves. The exploration work that we intend to conduct on our claims or properties may not result in the discovery of commercial quantities of graphite, vanadium, gold, uranium or other minerals. Uncertainties and unexpected occurrences are virtually given in mineral exploration and often result in unsuccessful exploration efforts. In such a case, we would be unable to complete our business plan.

**Because of the inherent dangers involved in mineral exploration, there is a risk that we may incur liability or damages as we conduct our business.**

The search for valuable minerals involves numerous hazards. As a result, we may become subject to liability for such hazards, including pollution, cave-ins and other hazards against which we cannot, or may elect not, to insure against. We currently have no such insurance, but our management intends to periodically review the availability of commercially reasonable insurance coverage. If a hazard were to occur, the costs of rectifying the hazard may exceed our asset value and cause us to liquidate all our assets.

**If we confirm commercial concentrations of graphite, vanadium, gold, uranium or other minerals on our claims and interests, we can provide no assurance that we will be able to successfully bring those claims or interests into commercial production.**

If our exploration programs are successful in confirming deposits of commercial tonnage and grade, we will require significant additional funds in order to place the claims and interests into commercial production. This may occur for a number of reasons, including because of regulatory or permitting difficulties, because we are unable to obtain any adequate funds or because we cannot obtain such funds on terms that we consider economically feasible.

**Because access to our properties may be restricted by inclement weather or proper infrastructure, our exploration programs are likely to experience delays.**

Access to most of the properties underlying our claims and interests is restricted due to their remote locations and because of weather conditions. Some of our properties are only accessible by air. As a result, any attempts to visit, test, or explore the property are generally limited to those periods when weather permits such activities. These limitations can result in significant delays in exploration efforts, as well as mining and production efforts in the event that commercial amounts of minerals are found. This could cause our business to fail.

**As we undertake exploration of our claims and interests, we will be subject to the compliance of government regulation that may increase the anticipated time and cost of our exploration program.**

There are several governmental regulations that materially restrict the exploration of minerals. We will be subject to the mining laws and regulations in force in the jurisdictions where our claims are located, and these laws and regulations may change over time. In order to comply with these regulations, we may be required to obtain work permits, post bonds, complete environmental assessments and perform remediation work for any physical disturbance to land. While our planned budget for exploration programs includes a contingency for regulatory compliance, there is a risk that new regulations could increase our costs of doing business and prevent us from carrying out our exploration program, or that our budgeted amounts are inadequate.

**Our operations are subject to strict environmental regulations, which result in added costs of operations and operational delays.**

Our operations are subject to environmental regulations, which could result in additional costs and operational delays. All phases of our operations are subject to environmental regulation. Environmental legislation is evolving in some countries and jurisdictions in a manner that may require stricter standards, and enforcement, increased fines and penalties for non-compliance, more stringent environmental assessments of proposed projects, and a heightened degree of responsibility for companies and their officers, directors, and employees. There is no assurance that any future

changes in environmental regulation will not negatively affect our projects.

**We have no insurance for environmental problems.**

Insurance against environmental risks, including potential liability for pollution or other hazards as a result of the disposal of waste products occurring from exploration and production, has not been available generally in the mining industry. We have no insurance coverage for most environmental risks. In the event of a problem, the payment of environmental liabilities and costs would reduce the funds available to us for future operations. If we are unable to full pay for the cost of remedying an environmental problem, we might be required to enter into an interim compliance measure pending completion of the required remedy.

**We do not intend to pay dividends.**

We do not anticipate paying cash dividends on our common shares in the foreseeable future. We may not have sufficient funds to legally pay dividends. Even if funds are legally available to pay dividends, we may nevertheless decide, in our sole discretion, not to pay dividends. The declaration, payment and amount of any future dividends will be made at the discretion of our board of directors, and will depend upon, among other things, the results of our operations, cash flows and financial condition, operating and capital requirements, and other factors our board of directors may consider relevant. There is no assurance that we will pay any dividends in the future, and, if dividends are paid, there is no assurance with respect to the amount of any such dividend.

**Due to external market factors in the mining business, we may not be able to market any minerals that may be found.**

The mining industry, in general, is intensely competitive. Even if commercial quantities of minerals are discovered, we can provide no assurance to investors that a ready market will exist for the sale of these minerals. Numerous factors beyond our control may affect the marketability of any substances discovered. These factors include market fluctuations, the sale price of the minerals, the proximity and capacity of markets and processing equipment, and government regulations, including regulations relating to prices, taxes, royalties, land tenure, land use, mineral importing and exporting and environmental protection. The effect of these factors cannot be accurately predicted, but any combination of these factors may result in our not receiving an adequate return on invested capital.

**Our performance may be subject to fluctuations in market prices of any minerals that we find.**

The profitability of a mineral exploration project could be significantly affected by changes in the market price of the relevant minerals. Market prices of graphite have increased over the past several months due to possible new applications. The price of vanadium has increased due to the markets in China as well as the expanded uses including large-scale power storage application. The price of gold has fallen slightly after recently reaching record highs. Demand for gold can also be influenced by economic conditions, attractiveness as an investment vehicle and the relative strength of the U.S. dollar and local investment currencies. The market price of uranium has increased due in large measure to projections as to the number of new nuclear energy plants that will be constructed in China, the United States and other jurisdictions. A number of other factors affect the market prices for other minerals. The aggregate effect of the factors affecting the prices of various minerals is impossible to predict with accuracy. Fluctuations in mineral prices may adversely affect the value of any mineral discoveries made on the properties with which we are involved, which may in turn affect the market price and liquidity of our common shares and our ability to pursue and implement our business plan. In addition, the price of both graphite and vanadium can fluctuate significantly on a month-to-month and year-to-year basis.

**Because from time to time we hold a significant portion of our cash reserves in Canadian dollars, we may experience losses due to foreign exchange translations.**

From time to time we hold a significant portion of our cash reserves in Canadian dollars. Due to foreign exchange rate fluctuations, the value of these Canadian dollar reserves can result in translation gains or losses in U.S. dollar terms. If there was a significant decline in the Canadian dollar versus the U.S. dollar, our converted Canadian dollar cash balances presented in U.S. dollars on our balance sheet would significantly decline. If the US dollar significantly declines relative to the Canadian dollar our quoted US dollar cash position would significantly decline as it would be more expensive in US dollar terms to pay Canadian dollar expenses. We have not entered into derivative instruments to offset the impact of foreign exchange fluctuations.

**We are exposed to general economic conditions, which could have a material adverse impact on our business, operating results and financial condition.**

Recently there have been adverse conditions and uncertainty in the global economy as the result of unstable global financial and credit markets, inflation, and recession. These unfavorable economic conditions and the weakness of the credit market may continue to have, an impact on our Company's business and our Company's financial condition. The

current global macroeconomic environment may affect our Company's ability to access the capital markets may be severely restricted at a time when our Company wishes or needs to access such markets, which could have a materially adverse impact on our Company's flexibility to react to changing economic and business conditions or carry on our operations.

**Until we can full validate, the properties described herein have no known mineral reserves of any kind.**

Further details regarding our Company's properties, although not incorporated by reference, including the comprehensive geological report prepared in compliance with Canada's National Instrument 43-101 on the Sagar Property in Northern Québec, on the Green Giant Property in Madagascar and on the Joint Venture Ground (Molo Graphite Deposit) in Madagascar, have been filed within our Company's filings on Sedar at <http://www.sedar.com> (which website is expressly not incorporated by reference into this filing).

**Climate change and related regulatory responses may impact our business.**

Climate change as a result of emissions of greenhouse gases is a current topic of discussion and may generate government regulatory responses in the near future. It is impracticable to predict with any certainty the impact of climate change on our business or the regulatory responses to it, although we recognize that they could be significant. However, it is too soon for us to predict with any certainty the ultimate impact, either directionally or quantitatively, of climate change and related regulatory responses.

To the extent that climate change increases the risk of natural disasters or other disruptive events in the areas in which we operate, we could be harmed. While we maintain rudimentary business recovery plans that are intended to allow us to recover from natural disasters or other events that can be disruptive to our business, our plans may not fully protect us from all such disasters or events.

**The current financial environment may impact our business and financial condition that we cannot predict.**

The continued instability in the global financial system and related limitation on availability of credit may continue to have an impact on our business and our financial condition, and we may continue to face challenges if conditions in the financial markets do not improve. Our ability to access the capital markets has been restricted as a result of the economic downturn and related financial market conditions and may be restricted in the future when we would like, or need, to raise capital. The difficult financial environment may also limit the number of prospects for potential joint venture, asset monetization or other capital raising transactions that we may pursue in the future or reduce the values we are able to realize in those transactions, making these transactions uneconomic or difficult to consummate.

**ITEM 1B. UNRESOLVED STAFF COMMENTS**

Not applicable.

**ITEM 2. –PROPERTY**

The Company's executive offices are currently located at 520–141 Adelaide Street West, Toronto, Ontario, Canada M5H 3L5. These offices are leased on a month-to-month basis, and the Company's current monthly rental payments are approximately CAD\$10,000.

**ITEM 3. - LEGAL PROCEEDINGS**

We are currently not involved in any litigation that we believe could have a material adverse effect on our financial condition or results of operations. There is no action, suit, proceeding, inquiry or investigation before or by any court, public board, government agency, self-regulatory organization or body pending or, to the knowledge of the executive officers of our Company or any of our subsidiaries, threatened against or affecting our Company, our common stock, any of our subsidiaries or of our companies or our subsidiaries' officers or directors in their capacities as such, in which an adverse decision could have a material adverse effect.

**ITEM 4. – MINE SAFETY DISCLOSURES**

Not applicable.

**PART II**

## ITEM 5. - MARKET FOR REGISTRANT'S COMMON EQUITY, RELATED STOCKHOLDER MATTERS AND ISSUER PURCHASES OF EQUITY SECURITIES

### Market Information

As of September 18, 2013, there were 192,554,321 common shares issued and outstanding and 66,609,695 common shares underlying outstanding options and warrants to purchase, or securities convertible into, our common shares. Our common shares are quoted on the OTCQX under the symbol "ENZR", the TSX under the symbol "EGZ" and the Frankfurt Stock Exchange under the symbol "YE5". On September 18, 2013 the last reported sale price for our common shares on the OTCQX and TSX was US\$0.15 and CAD\$0.15 per share, respectively. The table below sets forth the high and low closing sale prices of our common shares for the fiscal quarters indicated as reported on the OTCQX and TSX. Over-the-counter market quotations reflect inter-dealer prices, without retail mark-up, markdown or commission and may not necessarily represent actual transactions.

	OTCBB / OTCQX (US\$)		TSX / TSX-V (CDN\$)	
Period	High	Low	High	Low
<b>Fiscal year ended June 30, 2014</b>				
First quarter ended September 30, 2013 (through September 18, 2013)	\$0.28	\$0.10	\$0.23	\$0.11
<b>Fiscal year ended June 30, 2013</b>				
First quarter ended September 30, 2012	\$0.41	\$0.27	\$0.39	\$0.27
Second quarter ended December 31, 2012	\$0.37	\$0.29	\$0.37	\$0.29
Third quarter ended March 31, 2013	\$0.34	\$0.17	\$0.34	\$0.18
Fourth quarter ended June 30, 2013	\$0.22	\$0.12	\$0.23	\$0.11
<b>Fiscal year ended June 30, 2012</b>				
First quarter ended September 30, 2011	\$0.36	\$0.18	\$0.34	\$0.17
Second quarter ended December 31, 2011	\$0.26	\$0.15	\$0.23	\$0.15
Third quarter ended March 31, 2012	\$0.44	\$0.17	\$0.43	\$0.165
Fourth quarter ended June 30, 2011	\$0.48	\$0.22	\$0.48	\$0.22
<b>Fiscal year ended June 30, 2011</b>				
First quarter ended September 30, 2010	\$0.33	\$0.18	\$0.34	\$0.185
Second quarter ended December 31, 2010	\$0.50	\$0.195	\$0.51	\$0.20
Third quarter ended March 31, 2011	\$0.585	\$0.39	\$0.63	\$0.38
Fourth quarter ended June 30, 2011	\$0.45	\$0.30	\$0.42	\$0.285
<b>Fiscal year ended June 30, 2010</b>				
First quarter ended September 30, 2009	\$0.68	\$0.14	N/A	N/A
Second quarter ended December 31, 2009	\$0.64	\$0.39	N/A	N/A
Third quarter ended March 31, 2010	\$0.48	\$0.29	N/A	N/A
Fourth quarter ended June 30, 2010	\$0.45	\$0.20	\$0.49	\$0.22

Our common shares commenced trading on the TSX-V on May 5, 2010. Our common shares ceased trading on the TSX-V and commenced trading on the TSX on June 16, 2011. Our common shares commenced trading on the OTCQX on August 28, 2013. Prior to that our common shares traded on the OTCBB.

### Holders

As of September 23, 2013, there were approximately 2,500 holders of record of common shares.

### Dividends

We have never declared any cash dividends with respect to our common shares. Future payment of dividends is within the discretion of our board of directors, and will depend upon, among other things, the results of our operations, cash flows and financial condition, operating and capital requirements, and other factors our board of directors may consider relevant. Although there are no material restrictions limiting, or that are likely to limit, our ability to pay dividends on our common shares, we presently intend to retain future earnings, if any, for use in our business and have no present intention to pay cash dividends on our common shares.

### Equity Compensation Plan Information

The following table sets forth information as of June 30, 2013 for (i) all compensation plans previously approved by the Company's security holders and (ii) all compensation plans not previously approved by the Company's security holders. Options reported below were issued under the Company's Amended 2006 Stock Option Plan.

Plan Category	Number of securities to be issued upon exercise of outstanding options, and warrants	Weighted-average exercise price of outstanding options and warrants	Number of securities remaining available for future under equity compensation plans (excluding securities reflected in column (a))
Equity compensation plans approved by security holders	--	--	--
Equity compensation plans not approved by security holders	7,630,000	\$0.15	5,080,000

### Recent Issuances of Unregistered Securities

From July 1, 2011 through June 30, 2013, the Company issued the following unregistered securities:

- On December 16, 2011 our Company issued 7,500,000 of our common shares valued at \$1,350,000 as consideration for the Joint Venture Agreement with Malagasy Minerals Ltd.
- On March 4, 2012, \$69,000 was received through the exercise of 460,000 stock options at \$0.15 per share.
- On March 25, 2012, the Company closed a private placement with DRA whereby the Company raised a total of \$635,000 by issuing 2,540,000 of our common shares at \$0.25 per share.
- During July 2012, \$105,000 was received through the exercise of 700,000 stock options at \$0.15 per share.
- On July 13, 2012, we issued 1,695,000 stock options to directors, officers and consultants of the Company.
- During November 2012, we closed a brokered and non-brokered private placement raising a total of \$2,032,500. We issued 5,807,142 shares of common stock at \$0.35 per share and 2,903,571 common share purchase warrants at an exercise price of \$0.50, expiring 24 months from the date of issue. We paid fees of \$119,010 and issued 340,028 compensation common share purchase warrants. Each compensation common share purchase warrant entitles the holder to purchase one common share at \$0.35 and one half of one common share purchase warrant at an exercise price of \$0.50.
- On February 27, 2013, we issued 5,900,000 stock options to directors, officers and consultants of the Company.
- During March 2013, we closed a private placement raising CAD\$2,358,000 (USD\$2,307,035). We issued 12,350,000 shares of common stock at prices between \$0.18 and \$0.20 per share. We paid a fee of \$86,000 (USD\$84,176) and issued 270,000 compensation common share purchase warrants. Each compensation common share purchase warrant entitles the holder to purchase one common share at CAD\$0.20.

The offer and sale of all shares of our common shares and warrants listed above were affected in reliance on the exemptions for sales of securities not involving a public offering, as set forth in Regulation S promulgated under the Securities Act. The Investor acknowledged the following: Subscriber is not a United States Person, nor is the Subscriber acquiring the shares of our common stock and warrants directly or indirectly for the account or benefit of a United States Person. None of the funds used by the Subscriber to purchase the shares of our common stock and warrants have been obtained from United States Persons. For purposes of this Agreement, "United States Person" within the meaning of U.S. tax laws, means a citizen or resident of the United States, any former U.S. citizen subject to Section 877 of the Internal Revenue Code, any corporation, or partnership organized or existing under the laws of the United States of America or any state, jurisdiction, territory or possession thereof and any estate or trust the income of which is subject to U.S. federal income tax irrespective of its source, and within the meaning of U.S. securities laws, as defined in Rule 902(o) of Regulation S, means: (i) any natural person resident in the United States; (ii) any partnership or corporation organized or incorporated under the laws of the United States; (iii) any estate of which any executor or administrator is a U.S. person; (iv) any trust of which any trustee is a U.S. person; (v) any agency or branch of a foreign entity located in the United States; (vi) any non-discretionary account or similar account (other than an estate or trust) held by a dealer or other fiduciary for the benefit or account of a U.S. person; (vii) any discretionary account or similar account (other than an estate or trust) held by a dealer or other fiduciary organized, incorporated, or (if an individual) resident in the United States; and (viii) any partnership or corporation if organized under the laws of any foreign jurisdiction, and formed by a U.S. person principally for the purpose of investing in securities not registered under the Securities Act, unless it is organized or incorporated, and owned, by accredited investors (as defined in Rule 501(a)) who are not natural persons, estates or trusts. Further, we anticipate that additional funding will be in the form of equity financing from the sale of our common stock. However, we cannot provide investors with any assurance that we will be able to raise sufficient funding for additional phases of exploration. We currently believe that debt financing will not be an alternative for funding additional phases of exploration. We do not have any arrangements in place for any future equity financing.

### Issuer Repurchases of Equity Securities

None



## **ITEM 6. – SELECTED FINANCIAL DATA**

As a “smaller reporting company”, we are not required to provide the information required by this Item. Refer to the financial statements included within this report.

## **ITEM 7. - MANAGEMENT’S DISCUSSION AND ANALYSIS OF FINANCIAL CONDITION AND RESULTS OF OPERATION**

Management’s Discussion and Analysis of Results of Financial Condition and Results of Operations (“MD&A”) should be read in conjunction with the financial statements included herein. Further, this MD&A should be read in conjunction with the Company’s Financial Statements and Notes to Financial Statements included in this Annual Report on Form 10-K for the years ended June 30, 2013 and June 30, 2012, as well as the “Business” and “Risk Factors” sections within this Annual Report on Form 10-K. The Company’s financial statements have been prepared in accordance with United States generally accepted accounting principles.

Management’s Discussion and Analysis may contain various “forward looking statements” within the meaning of Section 21E of the Securities Exchange Act of 1934, as amended, regarding future events or the future financial performance of the Company that involve risks and uncertainties. Certain statements included in this Form 10-K, including, without limitation, statements related to anticipated cash flow sources and uses, and words including but not limited to “anticipates”, “believes”, “plans”, “expects”, “future” and similar statements or expressions, identify forward looking statements. Any forward-looking statements herein are subject to certain risks and uncertainties in the Company’s business and any changes in current accounting rules, all of which may be beyond the control of the Company. The Company has adopted the most conservative recognition of revenue based on the most stringent guidelines of the SEC. Management will elect additional changes to revenue recognition to comply with the most conservative SEC recognition on a forward going accrual basis as the model is replicated with other similar markets (i.e. SBDC). The Company’s actual results could differ materially from those anticipated in these forward-looking statements as a result of certain factors, including those set forth therein. Undue reliance should not be placed on these forward-looking statements, which speak only as of the date hereof. We undertake no obligation to update these forward-looking statements.

Based on the nature of our business, we anticipate incurring operating losses in the foreseeable future. We base this expectation, in part, on the fact that very few mineral properties in the exploration stage ultimately develop into producing and profitable mines. Our future financial results are also uncertain due to a number of factors, some of which are outside our control. These factors include, but are not limited to: (1) our ability to raise additional funding; - the market price for graphite, vanadium, gold and uranium; (2) the results of our exploration programs and metallurgy analysis on our mineral properties; (3) the political instability in Madagascar; and (4) our ability to find joint venture and/or off-take partners for the development of our property interests.

Any future equity financing will cause existing shareholders to experience dilution of their interest in our Company. In the event we are not successful in raising additional financing, we anticipate that we will not be able to proceed with our business plan. In such a case, we may decide to discontinue our current business plan and seek other business opportunities in the resource sector. Any business opportunity would require our management to perform diligence on possible acquisition of additional resource properties. Such due diligence would likely include purchase investigation costs such as professional fees by consulting geologists, preparation of geological reports on the properties, conducting title searches and travel costs for site visits. It is anticipated that such costs will not be sufficient to acquire any resource property and additional funds will be required to close any possible acquisition.

During this period, we will need to maintain our periodic filings with the appropriate regulatory authorities and will incur legal and accounting costs. In the event no other such opportunities are available and we cannot raise additional capital to sustain operations, we may be forced to discontinue business. We do not have any specific alternative business opportunities in mind and have not planned for any such contingency.

Due to our lack of operating history and present inability to generate revenues, our auditors have stated their opinion that there currently exists substantial doubt about our ability to continue as a going concern.

### Estimated Geological Budget

From the date of this report, and subject to availability of capital, our plan is to incur approximately \$5,000,000 - \$8,000,000 on exploration, anticipated but not guaranteed to be commenced on or before our Company's fiscal year end of June 30, 2014, on our Madagascar properties and projected to be completed, subject to the availability of capital and any other unforeseen delays, by June 30, 2014. The following is a summary of the amounts budgeted to be incurred (presuming all \$8,000,000 is required):

Bankable Feasibility Study ("BFS") and metallurgy testing	\$ 3,500,000
Infill drilling if required for the BFS.	\$ 2,000,000
Building of a pilot plans	\$ 2,000,000
Environmental impact study	\$ 500,000
<b>Total</b>	<b>\$ 8,000,000</b>

The above amounts may be updated based on actual costs and the timing may be delayed based on several factors, including the availability of capital to fund the budget. The source of funds required to complete the budgeted items disclosed above will come from private placements in the capital markets.

Although no assurances can be provided, the pilot plant is now projected to be built starting in November 2013. The BFS process is currently ongoing and will continue through the fiscal year ending June 30, 2014. Infill drilling has been budgeted and will tentatively commence in January-February 2014, if it is a necessary part of the BFS.

### RESULTS OF OPERATIONS

We have had no operating revenues from inception on March 1, 2004 through to the year ended June 30, 2013. Our activities have been financed from the proceeds of securities subscriptions. From inception, on March 1, 2004, through June 30, 2013, we raised net aggregate proceeds of \$42,175,238 from private offerings of our securities and \$1,075,500 through the exercise of common share purchase warrants and common stock purchase options. For the year ended June 30, 2013, a total of \$4,181,133 (June 30, 2012: \$719,000) was raised through private offerings and the exercise of common stock purchase options. \$4,076,133 (June 30, 2012: \$635,000) of this amount was raised through two private placements and \$105,000 (June 30, 2012: \$84,000) raised through the exercise of warrants and common stock purchase options.

For the period from inception, March 1, 2004, through June 30, 2013, we incurred a loss before income taxes of \$75,073,641. Expenses included \$38,287,073 in mineral property and exploration costs and impairment losses on mineral properties. These costs include acquisition costs relating to the Madagascar properties, Sagar properties and other abandoned properties. We also incurred \$7,163,819 in professional fees since inception including senior management, certain geological accounting, and legal consulting costs; general and administrative expenses of \$7,875,094; stock based compensation valued at \$24,175,544; net foreign exchange translation gains totaling \$1,000,890; donated services and expenses of \$18,750 and total other income (including interest) of \$1,532,398.

The following are explanations for the material fluctuations during the year ended June 30, 2013 when compared to the year ended June 30, 2012:

- Amounts spent on mineral properties totalled \$3,720,735 (June 30, 2012: \$8,309,874), a decrease of \$4,589,139. During the year ended June 30, 2012, we spent \$3,770,129 (recorded within the statement of operations under impairment losses) to acquire the Joint Venture Property from Malagasy. During fiscal 2013, we focused our efforts on metallurgy testing and analysis as opposed to drilling. During fiscal 2012, we drilled 11,301 metres over two drill programs and completed trenching for 2,110 metres, the costs of which exceeded \$2,500,000. Following our accounting policies of expensing acquisition costs and exploration expenses on mineral properties as incurred, this amount increased the net loss for the year.
- Professional fees totalled \$1,663,965, down \$137,694 from the year ended June 30, 2012 (a total of \$1,801,659). The decrease is due to both the nature of exploration and geological work performed during fiscal 2013 relative to fiscal 2012 ( i.e. less labour intensive consultants' time surrounding the drill program and analysis of the subsequent drill results and the reduction in legal expenses incurred). Fiscal 2012 had higher legal costs surrounding the acquisition of the Joint Venture Property from Malagasy.
- General and administration relates to fees associated with running the Toronto office and the Madagascar operations on the property. These costs decreased by \$139,028 between periods (June 30, 2013: \$1,348,641, June 30, 2012: \$1,487,669). Significant costs within the fiscal 2012 amount include travel expenses for trips to the exploration site in Madagascar for the drill and trenching programs, trips to the capitals of Madagascar and Mauritius to meet government officials, including the Prime Minister and the Minister of Mines, trips to Europe for

graphite conferences and meeting with investors and interested parties, and to Australia to negotiate and finalize the Malagasy Joint Venture Property agreement. During fiscal 2013, travel to Madagascar decreased.

- Investment income increased by \$143,059 from \$164,933 for the year ended June 30, 2012 to \$307,992 for the year ended June 30, 2013. Returns on our passive investments were the reason for this increase.

### **Liquidity, Capital Resources and Foreign Currencies**

As at June 30, 2013, we had cash on hand of \$825,100. Our working capital was \$378,489. Subsequent to June 30, 2013 and as of the date of the report, we raised CAD\$837,500 and USD\$1,230,000 by issuing 16,950,001 of the Company's common shares. In connection with the closing, the Company paid compensation consisting of a cash fee of CAD\$57,750 and USD\$18,000 and issued 552,000 broker common stock purchase warrants. We hold a significant portion of cash reserves in Canadian dollars. Due to foreign exchange rate fluctuations, the value of these Canadian dollar reserves can result in translation gains or losses in US dollar terms. If there was to be a significant decline in the Canadian dollar against the US dollar, the US dollar value of that Canadian dollar cash position presented on our balance sheet would also significantly decline. If the US dollar significantly declines relative to the Canadian dollar, our quoted US dollar cash position would also significantly decline. Such foreign exchange declines could cause us to experience losses. In addition to paying expenses in Canadian dollars, we also pay expenses in South African Rand, Madagascar Ariary and Australian Dollars. Therefore, we are subject to risks relating to movements in those currencies.

There are no assurances that we will be able to achieve further sales of common shares or any other form of additional financing. If we are unable to achieve the financing necessary to continue the plan of operations, then we will not be able to continue our exploration and our venture will fail.

### **Capital Financing**

- From inception through June 30, 2004, we raised \$59,750 through the issuance of 9,585,000 common shares.
- For the year ended June 30, 2005, we did not raise any capital from new financings.
- For the year ended June 30, 2006, we raised \$795,250 through the issuance of 2,750,000 common shares and 2,265,000 common share purchase warrants.
- For the year ended June 30, 2007, we raised \$17,300,000 through the issuance of 34,600,000 common shares and 29,000,250 common share purchase warrants.
- For the year ended June 30, 2008, we did not raise any capital from new financings.
- For the year ended June 30, 2009, we raised \$680,000 through the issuance of 6,800,000 common shares and 3,400,000 common share purchase warrants.
- For the year ended June 30, 2010, we raised \$6,500,000 through the issuance of 21,666,667 common shares and 21,666,667 common share purchase warrants.
- For the year ended June 30, 2011, we raised net proceeds of \$13,178,708 through the issuance of 30,936,654 common shares and 15,468,328 common share purchase warrants and \$886,501 (by issuing 4,549,500 common shares) through the exercise of common share purchase warrants.
- For the year ended June 30, 2012, we raised proceeds of \$635,000 (by issuing 2,540,000 common shares) through the issuance of common shares and \$84,000 (by issuing 510,000 common shares) through the exercise of common stock purchase options.
- For the year ended June 30, 2013, we raised net proceeds of \$4,076,133 through the issuance of 18,157,142 common shares and 3,513,599 common share purchase warrants and \$105,000, by issuing 700,000 common shares, through the exercise of common stock purchase options.

We will likely require additional funding during fiscal 2014, which will likely be in the form of equity financing from the sale of our common shares. However, we cannot provide investors with any assurance that we will be able to raise sufficient funding from the sale of common shares for additional phases of exploration.

### **Issuances of Securities**

We have funded our business to date from sales of our securities. During the year ended June 30, 2013 and since July 1, 2011, we have issued the following unregistered securities:

- On December 16, 2011, we issued 7,500,000 shares of common stock at \$0.18 per share valued at \$1,350,000 as consideration for the Joint Venture Agreement with Malagasy Minerals Ltd.
- On March 4, 2012, \$69,000 was raised through the exercise of 460,000 common stock purchase options at \$0.15 per common share.
- On March 25, 2012, we closed a private placement with DRA Minerals Inc. ("DRA") whereby we raised a total of \$635,000 by issuing 2,540,000 shares of common stock at \$0.25 per common share. This results in DRA having a current equity position in our company. Under the terms of a Memorandum of Understanding signed during early

2012, DRA has the right to acquire up to a 5% equity position in our company through private placement. Future private placements will be done at market conditions.

- During July 2012, \$105,000 was raised through the exercise of 700,000 stock options at \$0.15.
- On July 13, 2012, we issued 1,695,000 stock options to directors, officers and consultants of our company.
- During November 2012, we closed a brokered and non-brokered private placement raising a total of \$2,032,500. We issued 5,807,142 common stock at \$0.35 per share and 2,903,571 common share purchase warrants at an exercise price of \$0.50, expiring 24 months from the date of issue. We paid fees of \$119,010 and issued 340,028 compensation common share purchase warrants. Each compensation common share purchase warrant entitles the holder to purchase one common share at \$0.35 and one half of one common share purchase warrant at an exercise price of \$0.50.
- On February 27 2012, we issued 5,900,000 stock options to directors, officers and consultants of our company.
- During March 2013, we closed a private placement raising CAD\$2,358,000 (USD\$2,307,035). We issued 12,350,000 common stock at prices between CAD\$0.18 and CAD\$0.20 per share. We paid a fee of CAD\$86,000 (USD\$84,176) and issued 270,000 compensation warrants. Each compensation warrant entitles the holder to purchase one common share at CAD\$0.20.

#### **Off-balance sheet arrangements**

We have no off-balance sheet arrangements including arrangements that would affect the liquidity, capital resources, market risk support and credit risk support or other benefits.

#### **CRITICAL ACCOUNTING POLICIES**

##### **Principals of Consolidation and Basis of Presentation**

Our Company's consolidated financial statements are expressed in US dollars and presented in accordance with accounting principles generally accepted in the United States ("U.S. GAAP"). Our consolidated financial statements include the accounts of Energizer Resources Inc. and its wholly owned subsidiaries, Energizer Resources (Mauritius) Ltd., THB Ventures Ltd., Energizer Resources Madagascar Sarl, and Energizer Resources Minerals Sarl. In addition, these consolidated financial statements include the Company's 75% interest in Madagascar-ERG Joint Venture (Mauritius) Ltd. and its 100% owned subsidiary ERG (Madagascar) Sarl. All inter-company balances and transactions have been eliminated on consolidation.

##### **Mineral Property Costs**

Our Company has been in the exploration stage since its inception on March 1, 2004, and has not yet realized any revenues from its mineral operations. The company follows the accounting policy of expensing all mineral property expenses as incurred. When it has been determined that a mineral property can be economically developed as a result of establishing reserves, the costs then incurred to develop such property will be capitalized. Such costs will be amortized using the units of production method over the estimated life of the reserve. If properties are abandoned or the carrying value is determined to be in excess of possible future recoverable amounts the Company will write off the appropriate amount.

##### **Financial Instruments**

The fair value of cash and cash equivalents, amounts receivable, marketable securities, and accounts payable and accrued liabilities were estimated to approximate their carrying values due to their short term nature. The Company's exploration operations are primarily in Madagascar but also in Canada, which result in exposure to market risks from changes in foreign currency rates. Financial risk is the risk to the Company's operations that arise from fluctuations in foreign exchange rates and the degree of volatility of these rates.

##### **Foreign Currency Translation**

The Company's functional and reporting currency is United States Dollars. Monetary assets and liabilities denominated in foreign currencies are translated in accordance with ASC Topic-830, "Foreign Currency Translation", using the exchange rate prevailing at the balance sheet date. Gains and losses arising on settlement of foreign currency denominated transactions or balances are included in the consolidated statement of operations.

##### **Stock Based Compensation**

The Company has a stock option plan. All stock-based awards granted, including those granted to directors not acting in their capacity as directors, are accounted for using the fair value based method (the Black-Scholes model for valuing stock options). The fair value of common stock purchase options granted is recognized as an expense within the income statement and a corresponding increase in shareholder equity. Any consideration paid by eligible participants on the

exercise of common stock purchase options is credited to capital stock. The additional paid in capital amount associated with common stock purchase options is transferred to capital stock upon exercise.

#### **Use of Estimates**

The consolidated financial statements include estimates, which, by their nature, are uncertain. The preparation of consolidated financial statements requires management to make estimates and assumptions that affect the reported amounts of assets and liabilities and disclosure of contingent assets and liabilities at the date of the consolidated financial statements and the reported amounts of revenues and expenses during the period. On an ongoing basis, management evaluates its judgments and estimates in relation to assets, liabilities, revenue and expenses. Management uses historical experience and other factors as the basis for its judgments and estimates. Actual results may differ from those estimates. The impacts of estimates are pervasive throughout these consolidated financial statements, and may require accounting adjustments based on future occurrences. Revisions to accounting estimates are recognized in the period in which the estimate is revised and the revision affects current and future periods.

#### **RECENT ACCOUNTING PRONOUNCEMENTS**

The following are recent accounting pronouncements, which may have an impact on the Company's future financial statements. FASB has issued the following pronouncements. The Company is currently evaluating the impact of ASC Topic - 210, ASC Topic - 740 and ASC Topic - 220.

- "Balance Sheet (ASC Topic - 210): Disclosures about Offsetting Assets and Liabilities": ("ASU 2011-11") was issued during December 2011. FASB issued guidance on how to determine whether it is appropriate to offset or net certain assets and liabilities on the balance sheet and the additional disclosure that this entails. The guidance is effective annual periods beginning on or after January 1, 2013.
- "Comprehensive Income (ASC Topic - 220): Reporting of Amounts Reclassified Out of Accumulated Other Comprehensive Income": ("ASU 2013-02") was issued during February 2013. FASB issued has guidance, which requires an entity to disclose in a single location the effects of reclassification out of accumulated other comprehensive income ("AOCI"). The guidance is effective prospectively for reporting periods beginning after December 31, 2013.
- "Income Taxes (ASC Topic - 740): Presentation of an Unrecognized Tax Benefit when a Net Operating Loss Carry-forward, a Similar Tax Loss, or a Tax Credit Carry-forward Exists" ("ASU 2013-11") was issued during July 2013. FASB issued guidance on how to present an unrecognized tax benefit. The guidance is effective for annual periods beginning after December 15, 2013.

#### **ITEM 7.A. - QUANTITATIVE AND QUALITATIVE DISCLOSURES ABOUT MARKET RISK**

We do not hold any derivative instruments and do not engage in any hedging activities. Most of our activity is the development and mining of our mineral properties in Madagascar and Canada.

#### **ITEM 8. - FINANCIAL STATEMENTS AND SUPPLEMENTARY DATA**

The financial statements required by this Item, the accompanying notes thereto and the reports of independent accountants are included, as part of this Form 10-K immediately following the signature page.

#### **ITEM 9. - CHANGES IN AND DISAGREEMENTS WITH ACCOUNTANTS ON ACCOUNTING AND FINANCIAL DISCLOSURE**

On May 13, 2013, the Company received notice that, effective June 1, 2013, MSCM LLP ("MSCM") the Company's independent registered public accountants, merged with MNP LLP ("MNP"). Most of the professional staff of MSCM continued with MNP either as employees or partners will continue their practice with MNP. On May 31, 2013, the Company's Board of Directors approved the appointment of MNP as MSCM's successor to continue as the Company's independent registered public accountant for the fiscal year ending June 30, 2013.

#### **ITEM 9A. - CONTROLS AND PROCEDURES**

Our management team, under the supervision and with the participation of our principal executive officer and our principal financial officer, evaluated the effectiveness of the design and operation of our disclosure controls and procedures as such term is defined under Rule 13a-15(e) promulgated under the Securities Exchange Act of 1934, as amended (Exchange Act), as of the last day of the fiscal period covered by this report, June 30, 2013. The term disclosure controls and procedures means our controls and other procedures that are designed to ensure that information required to be disclosed by us in the reports that we file or submit under the Exchange Act is recorded, processed, summarized and reported, within the time periods specified in the SEC's rules and forms. Disclosure controls and

procedures include, without limitation, controls and procedures designed to ensure that information required to be disclosed by us in the reports that we file or submit under the Exchange Act is accumulated and communicated to management, including our principal executive and principal financial officer, or persons performing similar functions, as appropriate to allow timely decisions regarding required disclosure. Based on this evaluation and the deficiencies noted in our management's report on internal controls and procedures over financial reporting, our principal executive officer and our principal financial officer concluded that, given the size of our Company and its finance department, our disclosure controls and procedures were not effective as of June 30, 2013.

#### **Management's report on internal control over financial reporting**

Our principal executive officer and our principal financial officer, are responsible for establishing and maintaining adequate internal control over financial reporting, as such term is defined in Exchange Act Rules 13a-15(f). Management is required to base its assessment of the effectiveness of our internal control over financial reporting on a suitable, recognized control framework, such as the framework developed by the Committee of Sponsoring Organizations (COSO). The COSO framework, published in *Internal Control-Integrated Framework*, is known as the COSO Report. Our principal executive officer and our principal financial officer, have chosen the COSO framework on which to base its assessment. Based on this evaluation, we have concluded that, as of June 30, 2013, internal controls and procedures were not effective to detect the inappropriate application of US GAAP rules as described below.

The matters involving internal controls and procedures that the Company's management considered to be material weaknesses under the standards of the Public Company Accounting Oversight Board were: (1) inadequate segregation of duties consistent with control objectives; (2) lack of a majority of independent directors on the Company's board of directors, resulting in ineffective oversight in the establishment and monitoring of required internal controls and procedures; (3) insufficient written policies and procedures for accounting and financial reporting with respect to the requirements and application of US GAAP and SEC disclosure requirements; and (4) ineffective controls over period end financial disclosure and reporting processes.

Because of its inherent limitations, internal control over financial reporting may not prevent or detect misstatements. Therefore, even those systems determined to be effective can provide only reasonable assurance of achieving their control objectives. Furthermore, smaller reporting companies, like ours, face additional limitations. Smaller reporting companies employ fewer individuals and find it difficult to properly segregate duties. Often, only a few individuals control every aspect of the Company's operation and are in a position to override any system of internal control. Additionally, smaller reporting companies tend to utilize general accounting software packages that lack a rigorous set of software controls.

This annual report does not include an attestation report of our independent registered public accounting firm over management's assessment regarding internal control over financial controls. Management's report was not subject to attestation by our registered public accounting firm pursuant to an exemption for smaller reporting companies under Section 989G of the Dodd-Frank Wall Street Reform and Consumer Protection Act.

It should be noted that any system of controls, however well designed and operated, can provide only reasonable and not absolute assurance that the objectives of the system are met. In addition, the design of any control system is based in part upon certain assumptions about the likelihood of certain events. However, as noted, when the size of our Company and its finance department is materially increased, the deficiencies can be addressed. Once increased, we intend to create a new finance and accounting position that will allow for proper segregation of duties consistent with control objectives, and will increase our personnel resources and technical accounting expertise within the accounting function; and we will prepare and implement appropriate written policies and checklists which set forth procedures for accounting and financial reporting with respect to the requirements and application of US generally accepted accounting principles and SEC disclosure requirements. Because of these and other inherent limitations of control systems, there can be no assurance that any design will succeed in achieving its stated goals under all potential future conditions, regardless of how remote or when the size of our Company and our finance department will materially increase to address these issues.

#### **Changes in Internal Control over Financial Reporting**

During the fiscal year ended June 30, 2013, no changes were made to our internal control over financial reporting that have materially affected, or are reasonably likely to materially affect, our internal control over financial reporting.

#### **ITEM 9B. - OTHER INFORMATION**

None noted.